



Georgia Department of Transportation

Joint House and Senate Transportation Committee

2019 Update to the Ten Year Plan



Federal and State Funding Sources

STATE



Fuel

27.5 ¢ | GALLON GASOLINE
30.8 ¢ | GALLON DIESEL



Hotel

\$5 PER NIGHT



Annual Alternative Fuel Vehicle Fee

\$208.13 NON-COMMERCIAL
\$313.95 COMMERCIAL



Annual Heavy Vehicle

\$50 TO \$100



Bridge Bond Funds

\$100 MILLION



Agency and Other Fees

FEDERAL



**U.S. Department
of Transportation**
FEDERAL HIGHWAY
ADMINISTRATION



**Federal Aviation
Administration**



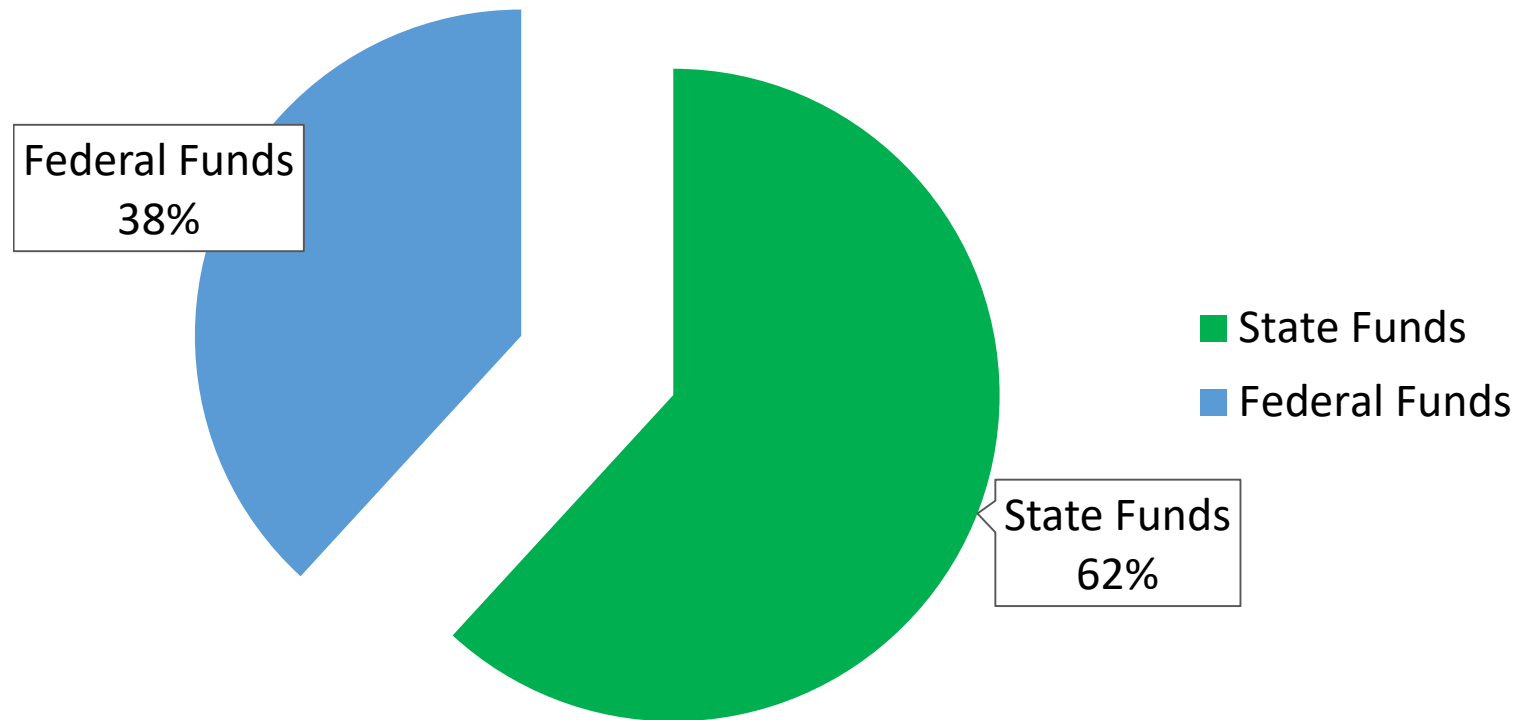
**Federal Transit
Administration**

AFY19 Budget Revenue Estimates

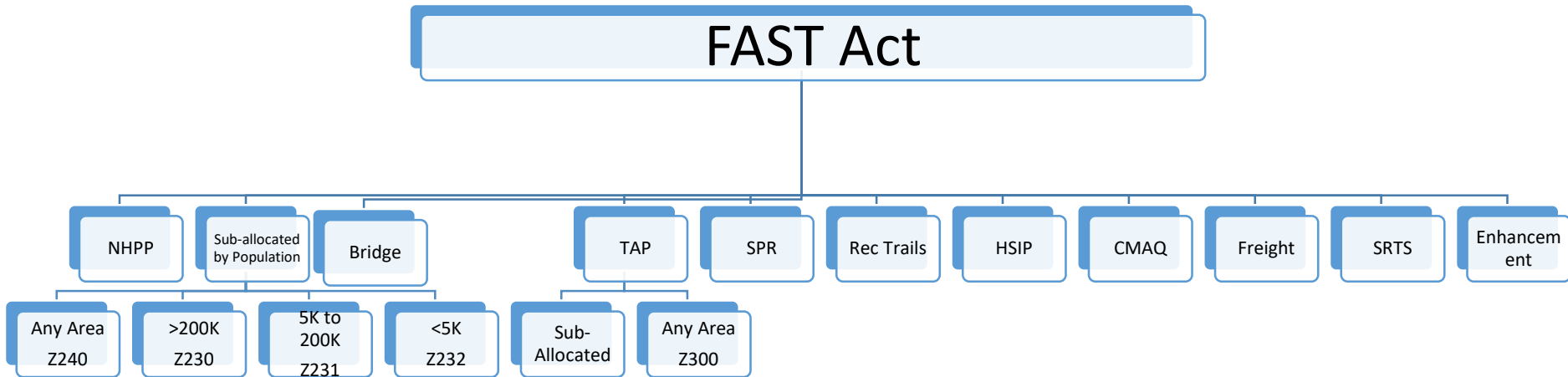
Revenue Estimates by Source

Transportation Revenues	FY 2019 Revenue Estimate
Motor Fuel Funds	
Motor Fuel	\$1,835,443,645
Interest on Motor Fuel Deposits	60,000,000
Subtotal: Motor Fuel Funds	\$1,895,443,645
State General Funds	
Hotel/Motel Fees	\$176,373,300
Highway Impact Fees	15,000,900
Alternative Vehicle Tax Exemptions	500,000
Jet Fuel Tax Exemptions	8,800,000
Other State General Funds	7,639,539
Subtotal: State General Funds	\$208,313,739
TOTAL TRANSPORTATION FUNDS AVAILABLE	\$2,103,757,384

FY19 Federal & State Funds



FFY 19 OA - \$1.237B



Federal Funding Impacts

Federal Funding

- Obligation Authority \$1.237B
 - Continuing Resolution 2 (Oct. 1-Dec. 21) \$269M
 - Continuing Resolution 3(Dec 22.-February 15) \$453M
- Advanced Construction Year to Date \$493M
- Construction Bids Year to Date \$833M (through Feb.)

Construction Letting Delays

- January - \$32M
- February - \$63M
- March - \$130M
- PE and ROW will see delays as well

Federal Transit Authority

- No reimbursements during shut down

Federal and State Funding Allocation & Apportionment Requirements

FEDERAL & STATE TRANSPORTATION FUNDS



STATE BUDGET PROGRAMS

Capital Construction; Capital Maintenance; Construction Administration; Data; Department Administration; Intermodal; LMIG; Local Roads Assistance Administration; Planning; Routine Maintenance; Traffic Management & Control; Payments to SRTA

FEDERAL (FAST ACT) PROGRAMS

National Highway Performance Program; Surface Transportation Programs: Z230 (Population > 200k), Z231 (Population 5k to 200k), Z232 (Population <5k), Z240 (any population), Transportation Alternatives Program, Recreational Trails, Safe Routes to School, Enhancement; State Planning and Research Program; Congestion Mitigation and Air Quality; Highway Safety Improvement Program; Freight Program

STIP & 16 MPO TIP Approval

Congressional Balancing

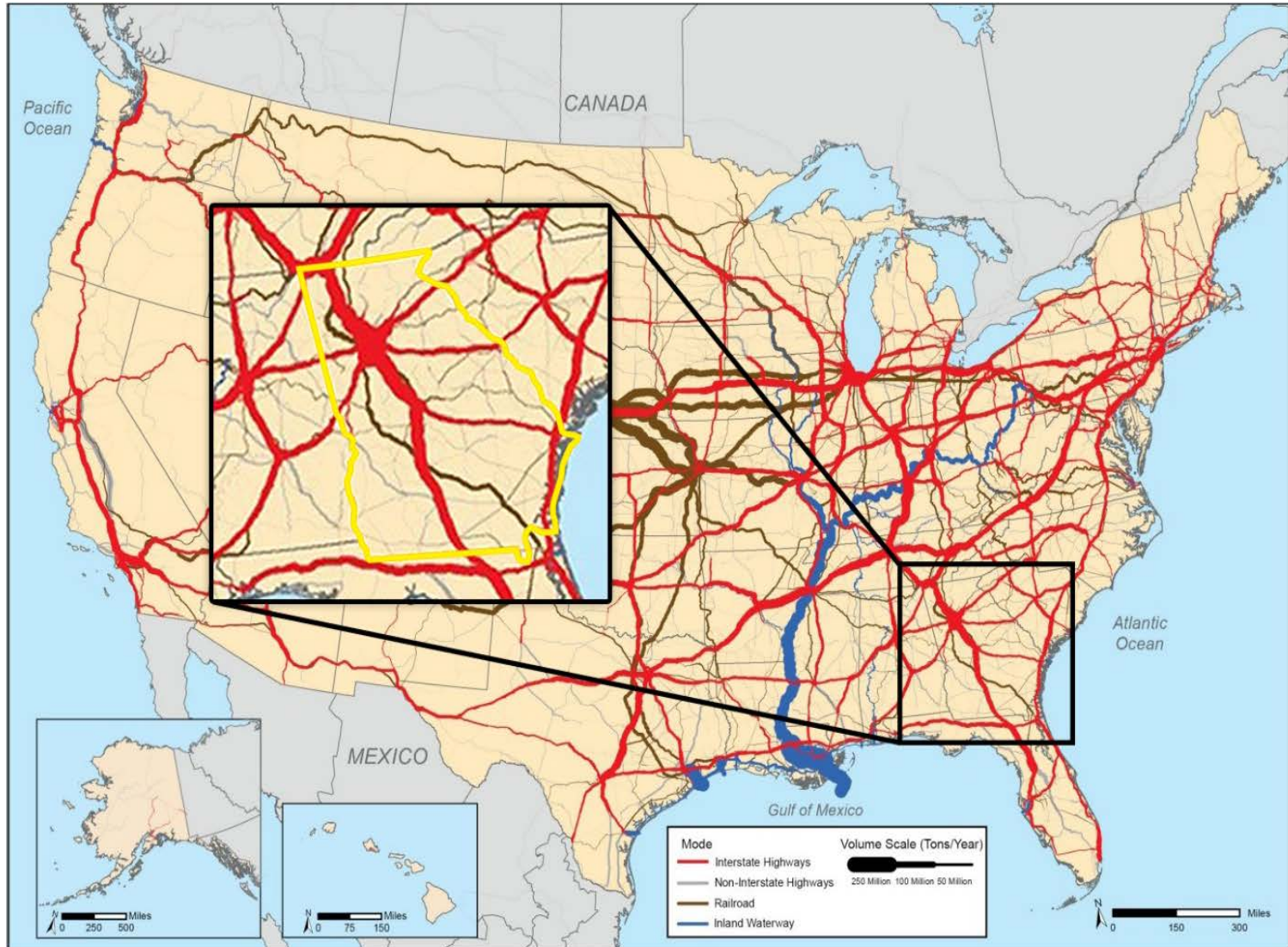
PROJECTS

Strategic Planning

- ✓ Statewide Strategic Transportation Plan
- ✓ Statewide Transportation Improvement Program
- ✓ MPO's: Transportation Improvement Program
- ✓ Statewide Freight & Logistics Action Plan
- ✓ Managed Lane Implementation Plan
- ✓ County/Multi County Transportation Plans
- ✓ Asset Management: Bridges and Pavements
- ✓ Strategic Highway Safety Plan

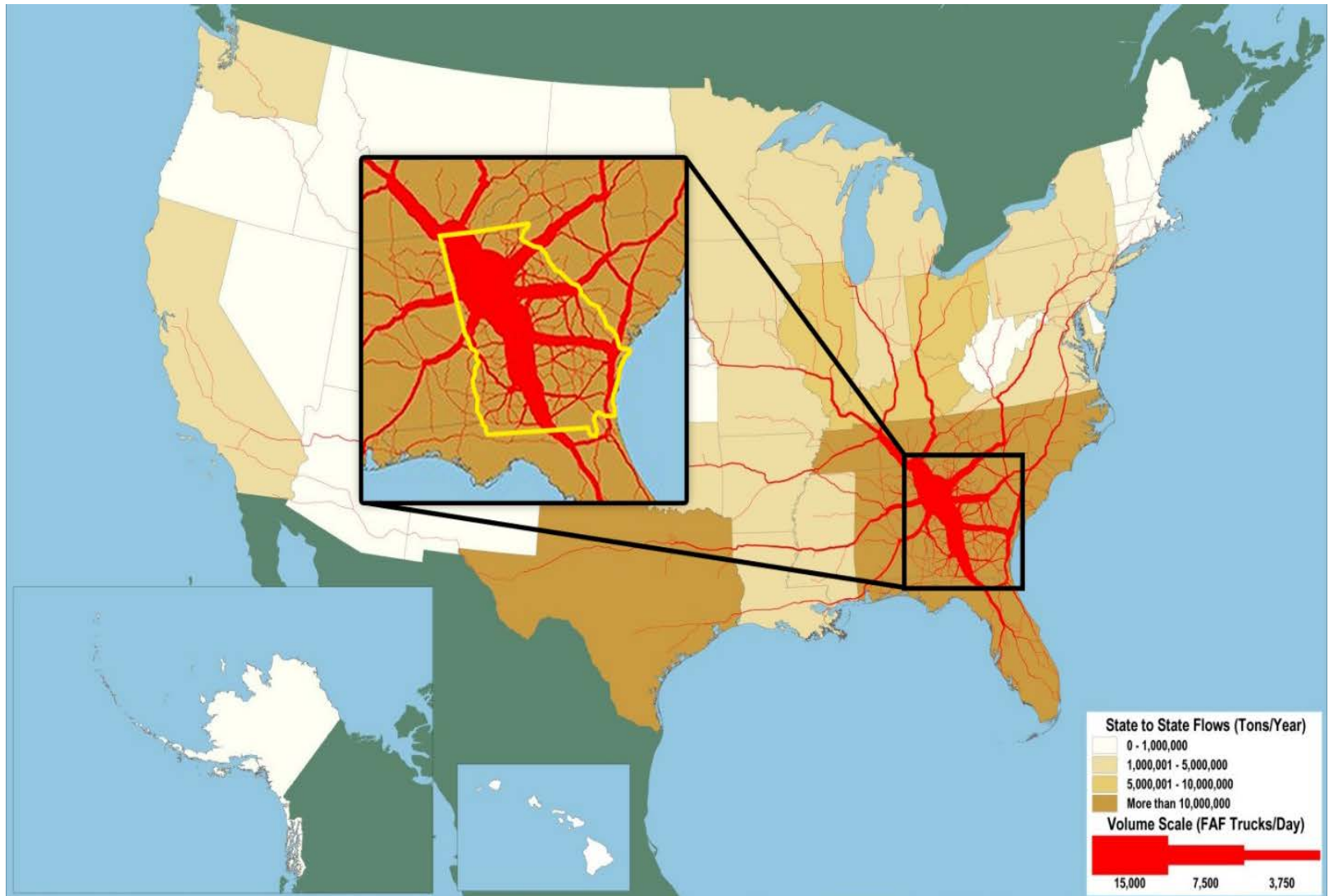


U.S. Freight Flow Volumes (all modes)



Sources: **Highways:** U.S. Department of Transportation, Federal Highway Administration, *Freight Analysis Framework*, Version 3.4, 2013; **Rail:** Based on Surface Transportation Board, Annual Carload Waybill Sample and rail freight flow assignments done by Oak Ridge National Laboratory; **Inland Waterways:** U.S. Army Corps of Engineers, Institute of Water Resources, Annual Vessel Operating Activity and Lock Performance Monitoring System data, 2013.

Georgia-related Freight Flow Volumes (roadway)



Note: Major flows include domestic and international freight moving by truck on highway segments with more than twenty five FAF trucks per day and between places typically more than fifty miles apart.

Source: U.S. Department of Transportation, Federal Highway Administration, Office of Freight Management and Operations, Freight Analysis Framework, version 3.4, 2012.

Savannah Port-related Freight Flow Volumes (roadway)

500 Truck Sample at 24 Hours



Savannah Port-related Freight Flow Volumes (roadway)

500 Truck Sample After 7 Days



Interstate Freight Investments

Supporting Georgia's Ports:and Express Lanes:

- Jimmy DeLoach Connector to I-95
- Jimmy DeLoach Parkway @ I-16
- I-95 @ I-16 Interchange
- I-16 widening

I-16 Corridor Improvements



I-16 at I-75, Macon



I-75 Commercial Vehicle Lanes



I-85 Express Lanes Extension & Widening



Freight Bottlenecks

- I-75 South Metro Express Lanes
- I-85 Express Lanes Extension
- Northwest Corridor Express Lanes
- SR 400 Express Lanes
- I-285/SR 400 Interchange
- I-285/I-85 Interchange
- I-285/I-20 East Interchange
- I-285/I-20 West Interchange
- I-75/I-285 NB CD
- I-285/675 Bouldercrest

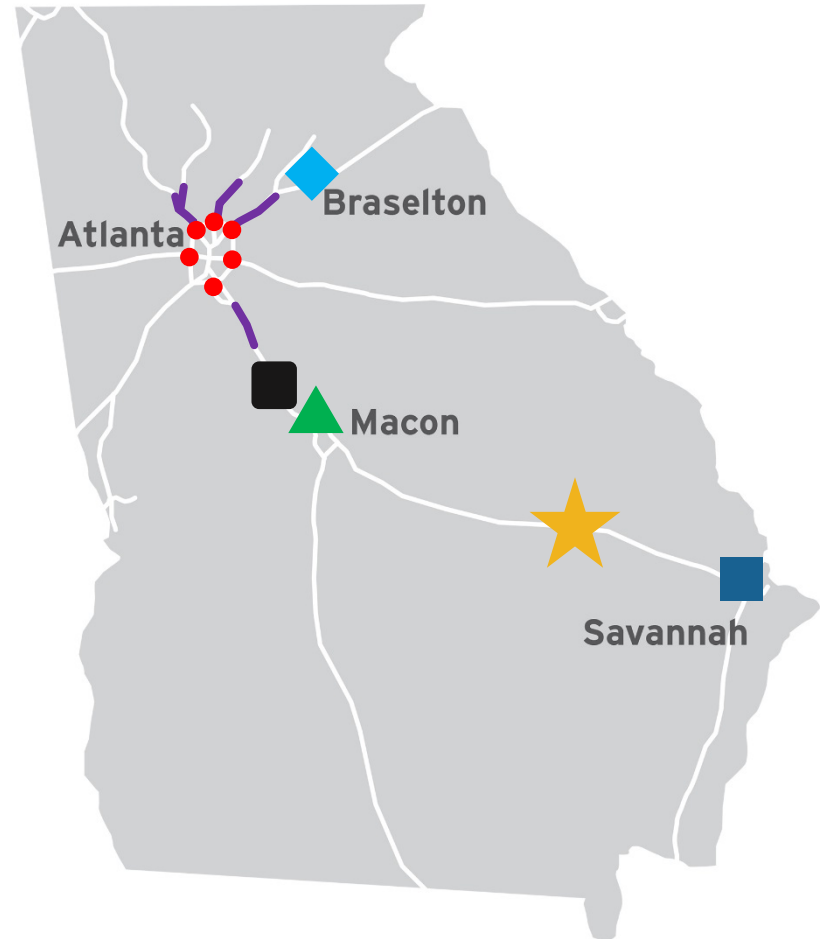


Figure 1A: ASTRoMaP System

Metro Freight Routes



Proposed 10 Year Plan Update FY2019 to FY 2028 Requirements

Establish a target percentage of resources to be expended and the respective fund sources:

- (1) Construction of new highway projects;**
- (2) Maintenance of existing infrastructure;**
- (3) Bridge repairs and replacement;**
- (4) Safety enhancements; and**
- (5) Administrative expenses**

Proposed 10 Year Plan Update FY2019 to FY 2028 Assumptions

FAST ACT (federal)

- ✓ Use Obligation Authority forecast to FY 21
- ✓ 1% growth per year going to FY 28
- ✓ Current and proposed TIFIA
- ✓ GARVEE

State

- ✓ Use FY 20 proposed
- ✓ 3% growth per year going to FY 23
- ✓ 1% growth past FY 23
- ✓ Current and proposed G.O. bonds

Excludes

- ❖ LMIG
- ❖ Intermodal (general appropriations)

Construction of New Highway Projects

Project Types:

- Widening (2-4 lanes, Passing Lanes, etc)
- New location
- Express lanes

Funding Sources:

- State
- Federal: NHPP, STP, NFP, CMAQ

Construction of New Highway Projects

Evaluation Factors

Mobility & Congestion	Volume to Capacity	LOS Grade	Urban v/c	Rural v/c
		LOS F:	Greater than 1.00	Greater than 1.00
		LOS E:	0.85-1.00	0.55-1.00
		LOS D:	0.70-0.85	0.35-0.55
		LOS A, B, C:	Below 0.70	Below 0.35
	State Route Prioritization	Critical:		
		High:		
		Medium:		
		Low:		
		Non-state route:		
Safety	Severity Index	1%+ above State Avg:		
		25%+ above State Avg:		
		50%+ above State Avg:		
		75%+ above State Avg:		
Economic Development	Travel Shed Economic Impact Score Percentage	<u>Economic Impact Score Percentage</u>		
		1-20		
		21-40		
		41-60		
		61-80		
		81-100		

Maintenance of Existing Roadways

Project Types:

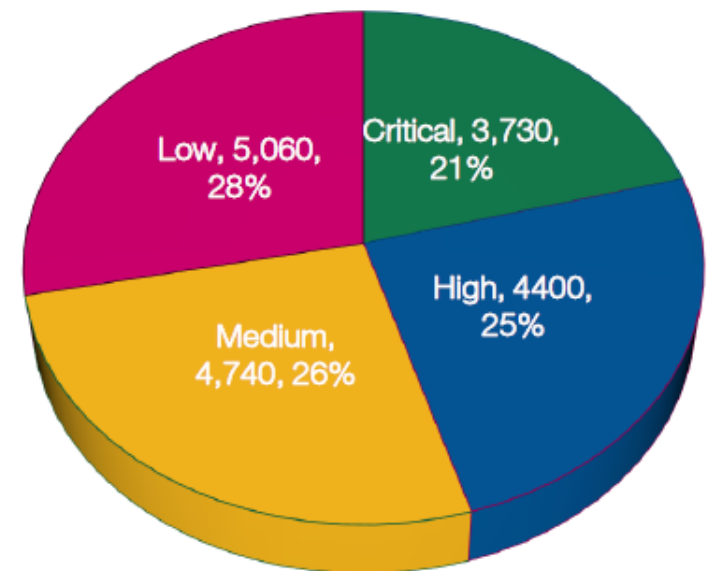
- Capital Maintenance & Rehabilitation
- Routine Maintenance
- State Route and Interstates only

Funding Sources:

- State
- Federal: NHPP, STBGP

Maintenance of Existing Roadways

State Route Prioritization



Bridge Repair & Replacements

Project Types:

- Replacements
- Capital Maintenance Rehabilitation
- Routine Maintenance
- Includes local bridges
- Does not include new bridges

Funding Sources:

- State
- Federal: NHPP, STBGP

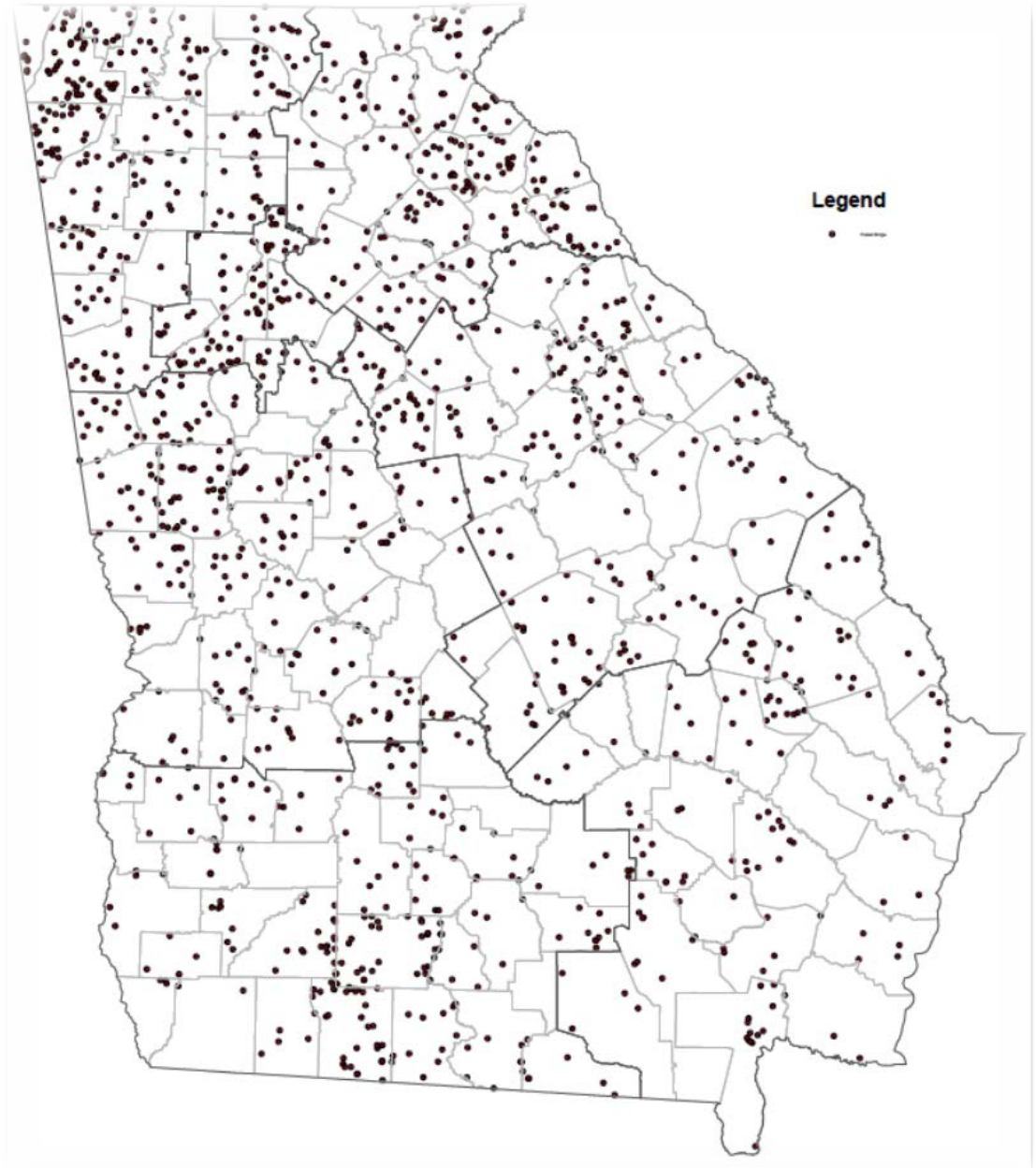
Bridge Repair & Replacements

General Priorities

- Strength or Structural Capacity
 - Closed Bridges or Bridges Posted less than 10 Tons
 - Bridges requiring Posting (10 Tons or more) limit trucking, agricultural equipment, school busses and other Emergency Vehicles
 - Substandard Bridges - bridges not meeting current design standards limit movement along freight corridors or ability to permit overweight loads or equipment
 - Detour lengths: service to schools, healthcare/emergency and industry
- Condition
 - Poor Condition - bridges that are considered structurally deficient and have one or more components in poor or more serious condition.
 - Fair Condition - bridge components show signs of aging and need to be properly maintained to extend useful life span
- Rehabilitation -effectively increase the useful service life approximately 25 years or if the structure needs to be replaced

Bridge Repair & Replacements

Load Restricted-Posted Bridges



Safety Enhancements

Project Types:

- Intersection Improvements
- Operational Improvements
- Quick Response
- Safety Hardware upgrades
- TAP, Enhancements
- Lighting
- Traffic Management Program, HERO's

Funding Sources:

- State
- Federal: HSIP, STBGP

Safety Enhancements

Safety Benefit/Cost Scoring

- Number of Crashes
- Type of Crashes (Fatal, Injury, Property Damage only)
- Crash Reduction/Crash Modification Factors

Strategic Highway Safety Plan Identification

- Signal Projects (signal equipment age and condition)
- Railroad Crossing Projects (trains & traffic volume per day)
- ITS Projects (Ops Improvement Committee evaluation)

Administrative Expenses

3 Categories:

- Construction Admin
- Dept Admin
- Planning

Funding Sources:

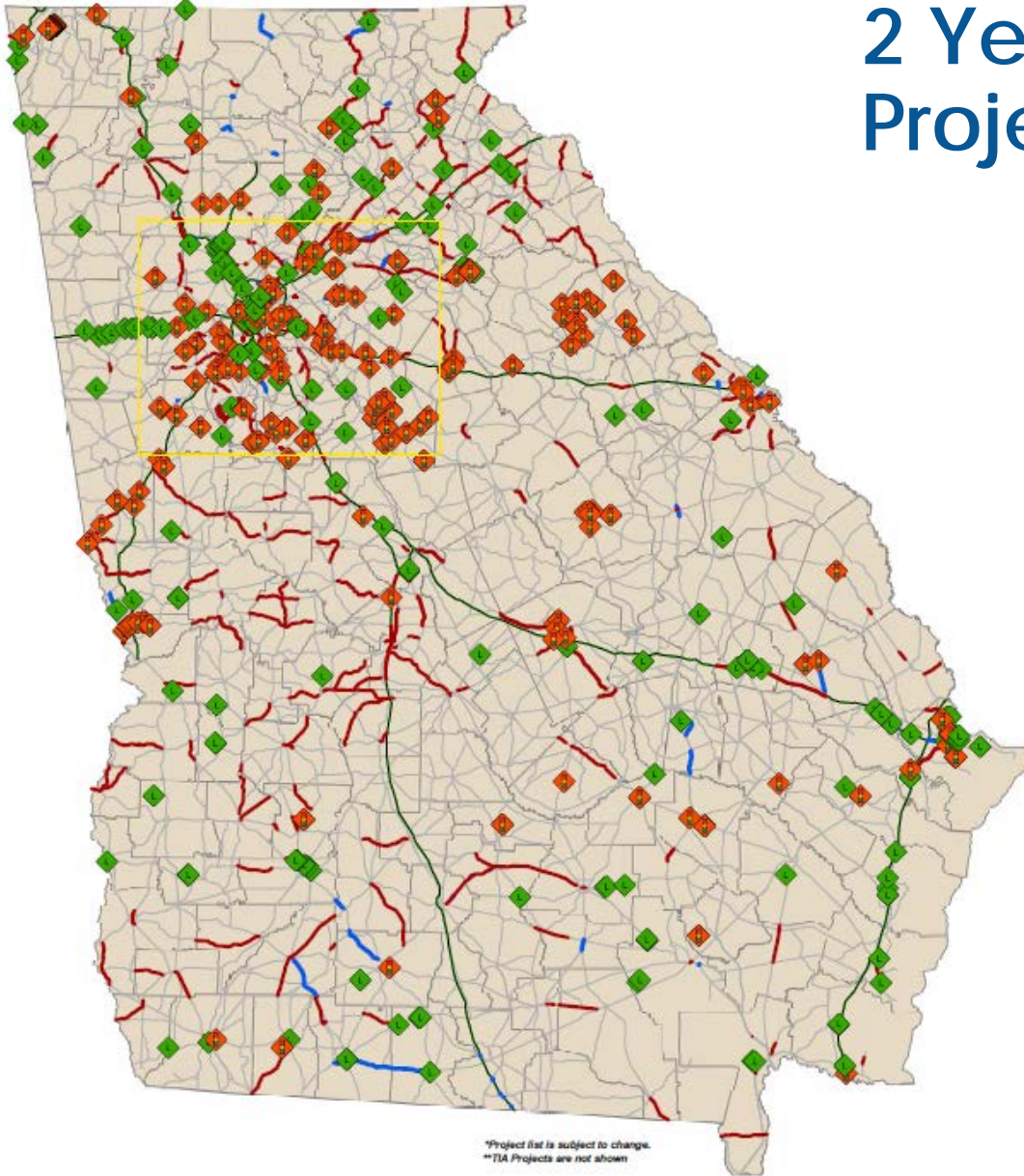
State

Federal: NHPP, NFP, HSIP, STBGP, CMAQ

Proposed 10 Year Plan Update FY2019 to FY 2028

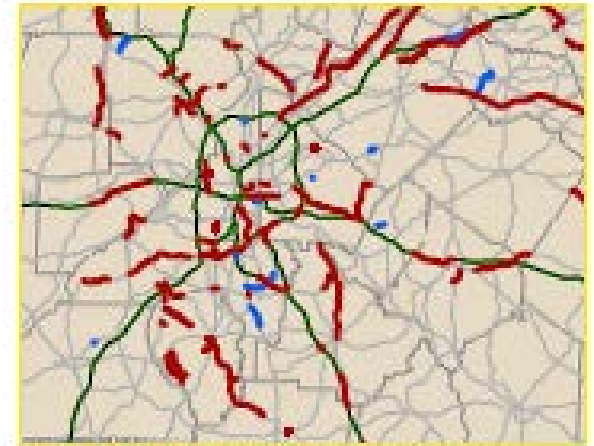
STATUTORY FUNDING CATEGORIES	FY2019			FY2020			FY2021			FY2022			FY2023		
	State	Fed	Total	State	Fed	Total	State	Fed	Total	State	Fed	Total	State	Fed	Total
Construction of New Highway Projects	43%	45%	44%	44%	58%	51%	48%	54%	51%	50%	56%	53%	52%	56%	54%
Maintenance of Existing Infrastructure	33%	20%	27%	32%	13%	23%	32%	12%	23%	31%	12%	22%	30%	12%	22%
Bridge Repairs & Replacements	10%	14%	12%	9%	11%	10%	5%	17%	11%	5%	16%	10%	5%	16%	10%
Safety Enhancements	5%	13%	9%	5%	12%	8%	5%	11%	8%	5%	11%	8%	5%	11%	7%
Administrative Expenses	10%	6%	8%	10%	6%	8%	10%	6%	8%	9%	5%	7%	9%	5%	7%
STATUTORY FUNDING CATEGORIES	FY2024			FY2025			FY2026			FY2027			FY2028		
	State	Fed	Total	State	Fed	Total	State	Fed	Total	State	Fed	Total	State	Fed	Total
Construction of New Highway Projects	52%	56%	54%	52%	52%	52%	53%	52%	52%	53%	52%	53%	54%	52%	53%
Maintenance of Existing Infrastructure	30%	12%	22%	30%	13%	22%	29%	13%	22%	29%	13%	22%	29%	13%	22%
Bridge Repairs & Replacements	5%	16%	10%	5%	17%	10%	5%	17%	10%	5%	17%	10%	5%	17%	10%
Safety Enhancements	4%	11%	7%	4%	12%	8%	4%	12%	8%	4%	12%	8%	4%	12%	8%
Administrative Expenses	9%	5%	7%	9%	6%	8%	9%	6%	8%	9%	6%	8%	9%	6%	7%

2 Year (FY19/FY20) Project Forecast



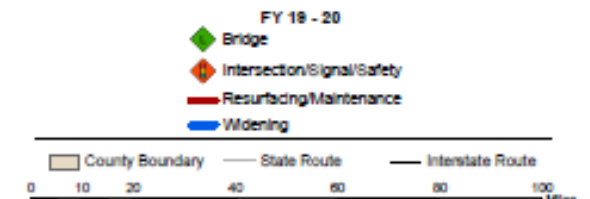
*Project list is subject to change.
**TIA Projects are not shown

Metro Atlanta



*Only Resurfacing/Maintenance/Widening Projects Shown

Project Type



Office of Transportation Data, November 1, 2018
Data Source: COTD Engineer's report file

GDOT FY18 Accountability & Investment Report

296
PROJECTS

VALUED AT
\$1.13 BILLION
PUT OUT FOR BID
BY GDOT

258
PROJECTS

VALUED AT
\$980 MILLION
AWARDED FOR
CONSTRUCTION

301
PROJECTS

VALUED AT
\$1.37 BILLION
OPENED TO
TRAFFIC

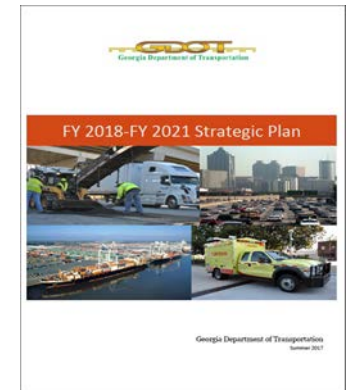
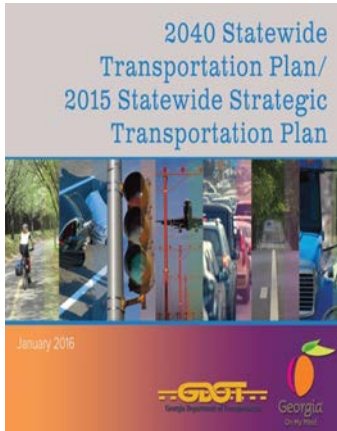
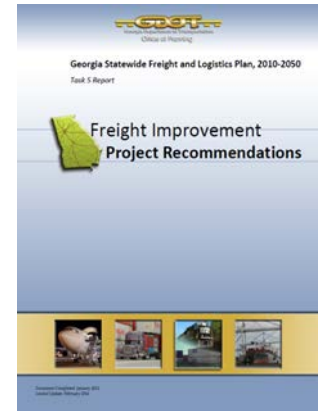
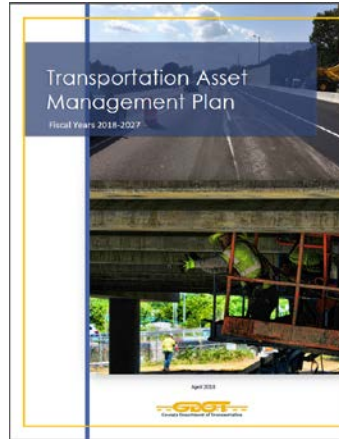
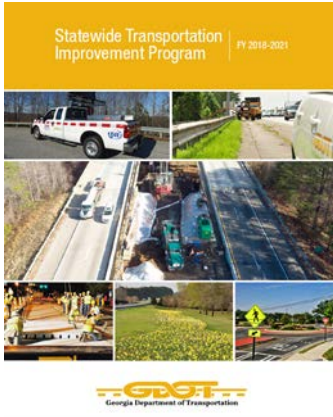
1,017 TOTAL ACTIVE PROJECTS
VALUED AT **\$5.67 BILLION**

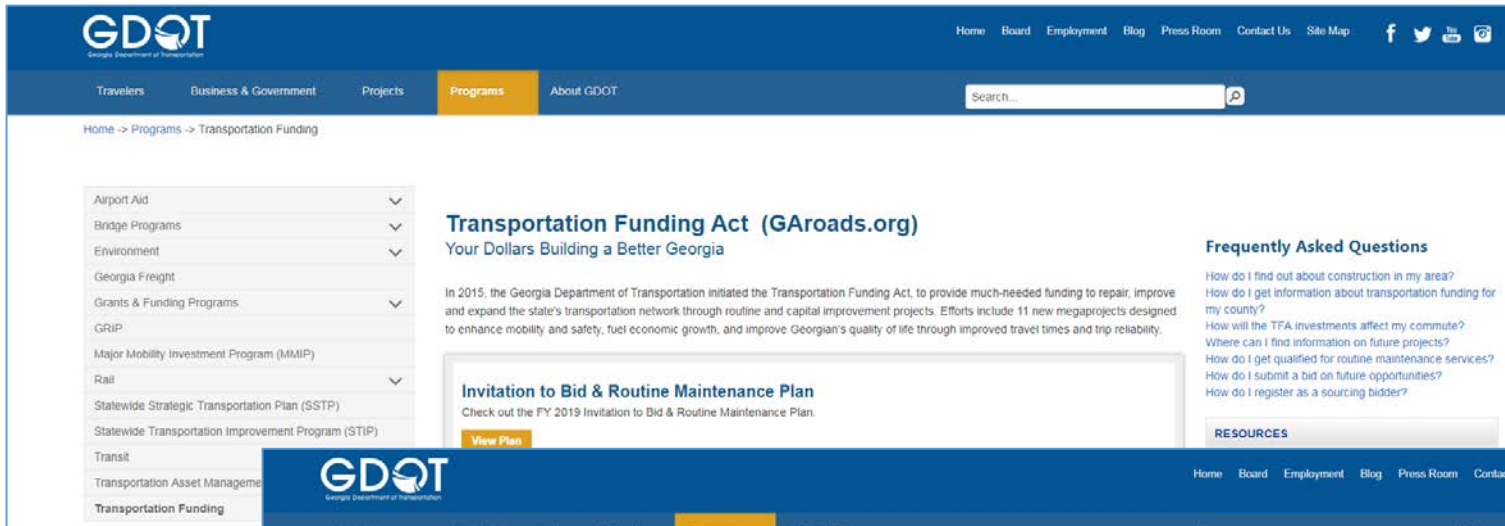




Feeding into the Ten Year Plan

For Your Reference





GDOT Georgia Department of Transportation

Home Board Employment Blog Press Room Contact Us Site Map

Travelers Business & Government Projects **Programs** About GDOT

Home -> Programs -> Transportation Funding

Airport Aid
 Bridge Programs
 Environment
 Georgia Freight
 Grants & Funding Programs
 GRIP
 Major Mobility Investment Program (MMIP)
 Rail
 Statewide Strategic Transportation Plan (SSTP)
 Statewide Transportation Improvement Program (STIP)
 Transit
 Transportation Asset Management
Transportation Funding

Transportation Funding Act (GAroads.org)

Your Dollars Building a Better Georgia

In 2015, the Georgia Department of Transportation initiated the Transportation Funding Act, to provide much-needed funding to repair, improve and expand the state's transportation network through routine and capital improvement projects. Efforts include 11 new megaprojects designed to enhance mobility and safety, fuel economic growth, and improve Georgian's quality of life through improved travel times and trip reliability.

Invitation to Bid & Routine Maintenance Plan

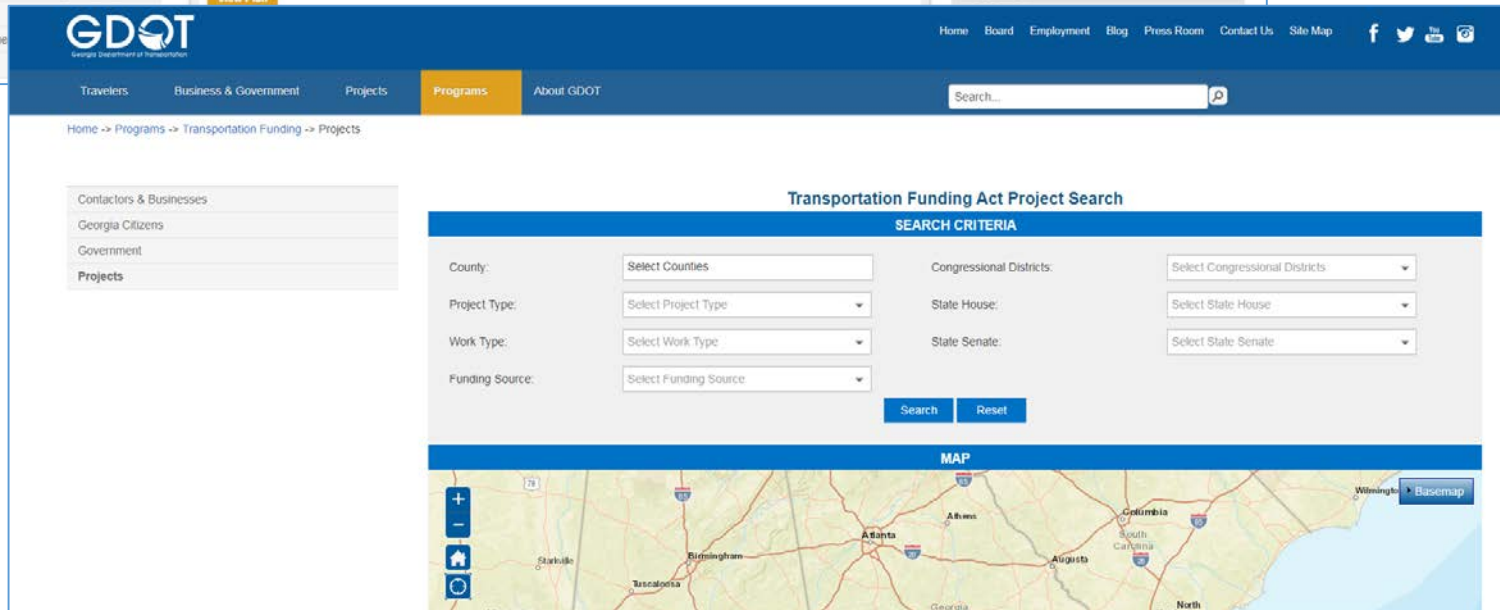
Check out the FY 2019 Invitation to Bid & Routine Maintenance Plan.

[View Plan](#)

Frequently Asked Questions

- How do I find out about construction in my area?
- How do I get information about transportation funding for my county?
- How will the TFA investments affect my commute?
- Where can I find information on future projects?
- How do I get qualified for routine maintenance services?
- How do I submit a bid on future opportunities?
- How do I register as a sourcing bidder?

RESOURCES



GDOT Georgia Department of Transportation

Home Board Employment Blog Press Room Contact Us Site Map

Travelers Business & Government Projects **Programs** About GDOT

Home -> Programs -> Transportation Funding -> Projects

Contactors & Businesses
Georgia Citizens
Government
Projects

Transportation Funding Act Project Search

SEARCH CRITERIA

County: Congressional Districts:

Project Type: State House:

Work Type: State Senate:

Funding Source:

[Search](#) [Reset](#)

MAP

Map of Georgia showing project locations. Includes a 'Basemap' button.