

IS YOUR SCHOOL SYSTEM PREPARED FOR A NATURAL DISASTER?

Kellerhals Art Center



Ringgold High School







INCIDENT COMMAND

- When your community becomes a “war zone” you become a member of incident command
- Incident command is 24/7
- Who will be on your team?
- Who will take care of your family?



COMMUNICATION

- Do you have a plan to communicate when power lines and CELL PHONE TOWERS are down?
- Text Messenger Service
- BUS RADIOS provide **reliable** communication



SECURING YOUR PROPERTY

- Did you know it is your responsibility to secure your property to prevent additional damage?
- Your insurance company will ask you to prove what you have done to secure your property



PRESS CONFERENCES

- All government and emergency officials speak with “one voice”
- In the beginning press conferences may occur several times a day
- You must be calm and communicate a plan



RED CROSS SHELTER?

- Do you have a school that is a designated Red Cross Shelter?
- Do you have a plan for opening buildings, providing leadership, coordinating volunteers, and providing meals, transportation, & custodians?
- Do you have a plan to receive donations?



RED CROSS SHELTER?

Many families include a family pet. Are you prepared for pets?





WHEN THE LIGHTS GO OUT IN GEORGIA – WHERE ARE YOUR SERVERS?

- Now our Main Server is in a Commercial Facility
- We have backups in New Jersey, Maryland, Texas, Atlanta, and Minnesota



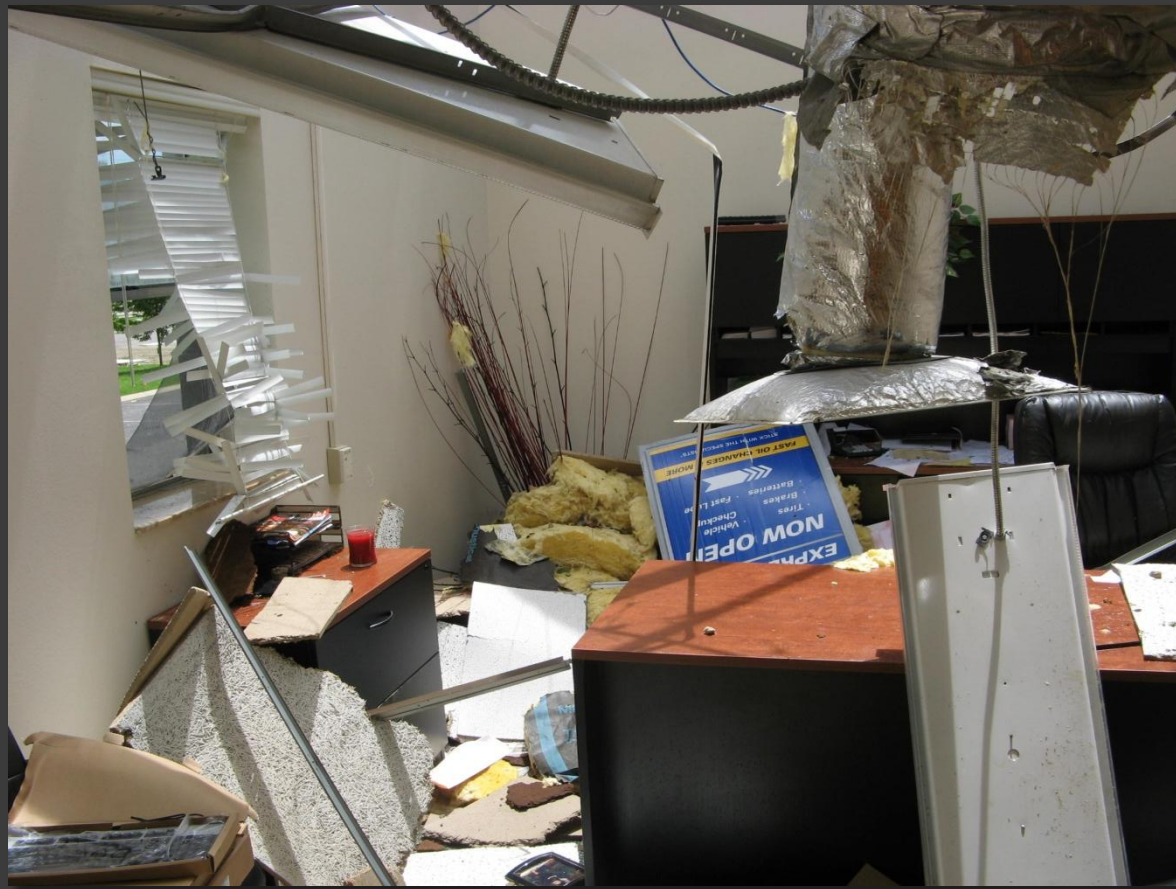
WHAT IS INCLUDED IN YOUR INSURANCE?
Demolition?



WITH INSURANCE DON'T ASSUME.
YOU MUST KNOW THE DETAILS OF YOUR
INSURANCE POLICY!



Do you have a **COMPREHENSIVE**
stadium package?



- Do you have an electronic inventory?
- **CHECK STATEMENT OF DECLARATION!**
Make sure you have FAIR MARKET VALUES
at every location



We Are Ringgold!
One Campus
Two Schools

Do you have a
contingency plan to
return to school when
multiple campuses are
destroyed?



APRIL 28, 2011



- Do you have a plan if you can't return to your CENTRAL OFFICE?
- Do you have a plan to make payroll? (April 29th)



MAY 2, 2011

We had to relocate:

- Finance
- Student Service
- Human Resources
- Child Nutrition
- Technology
- School Improvement
- Central Enrollment
- Special Education
- Superintendent's Office



HOW DO YOU MAKE IT?

You get help from your friends
– and you make some new ones!

