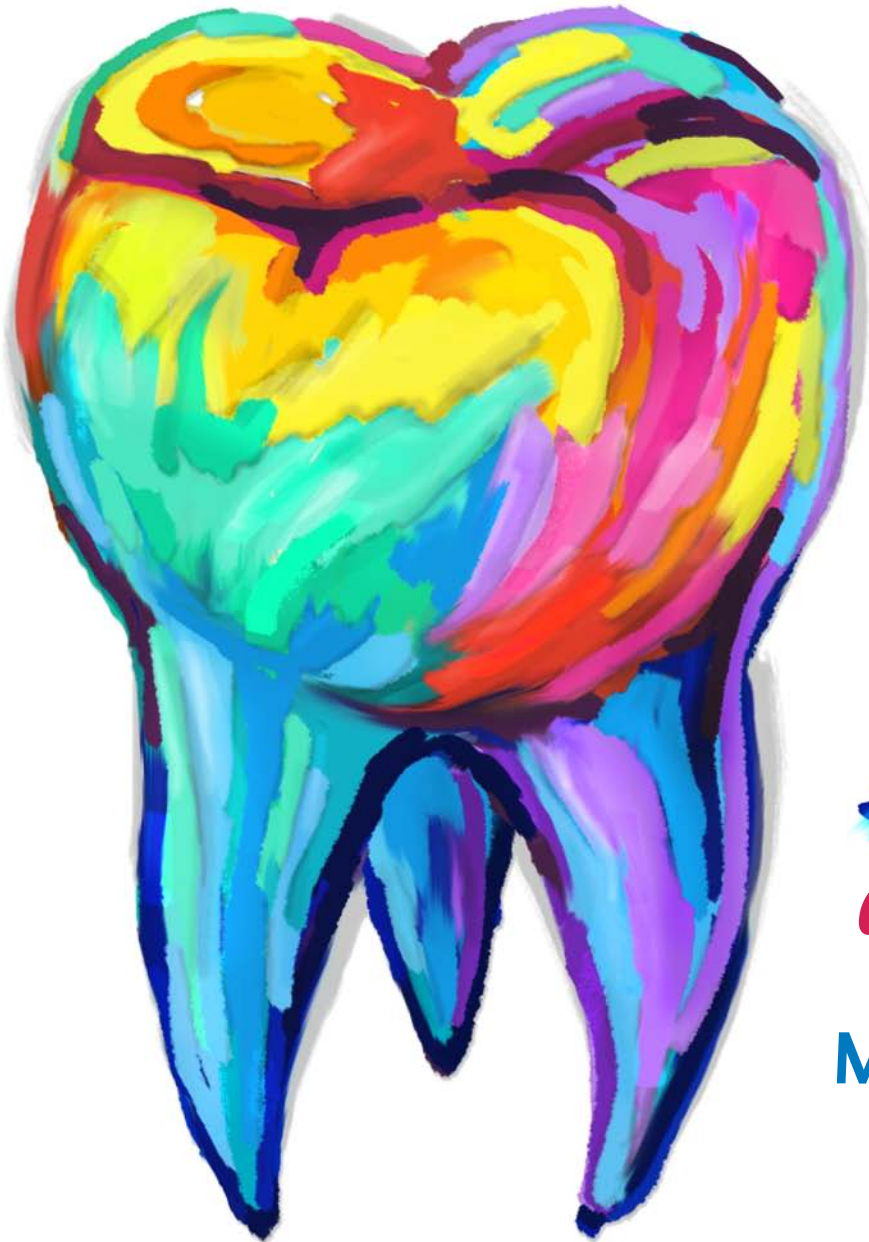




# Southern States SYMPOSIUM & EXPO

*presented by* **FDLA**



*Mastering  
the  
Art of  
Communication*

**MAY 10 – 12, 2018**

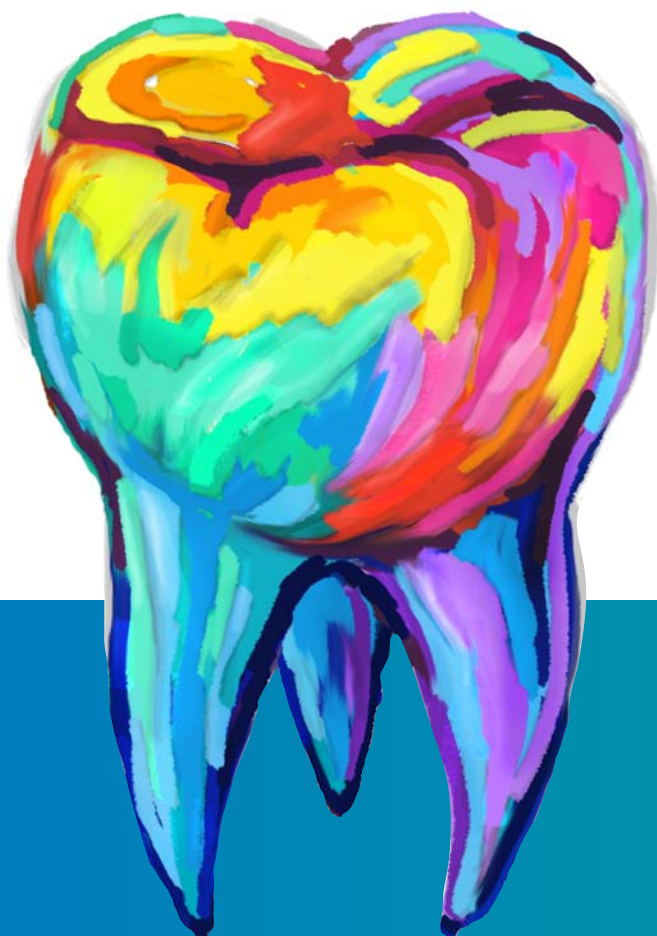


# Southern States SYMPOSIUM & EXPO

presented by **FDLA**

MAY 10 – 12, 2018 • RENAISSANCE ORLANDO AT SEAWORLD • ORLANDO, FL

**"M**astering the *Art of Communication*" is the theme for the 2018 Symposium. Communication is key in the dental industry. Make plans to attend and learn valuable information to master your communication both personally and professionally.



The Southern States Symposium & Expo, presented by FDLA, is the largest dental laboratory industry meeting in the country run by a nonprofit association. Everything being offered at the Symposium will provide everyone in attendance an exceptional experience.

## *Bring Your Client Dentists!*

The Southern States Symposium & Expo courses are specifically designed for the entire dental team. These courses will help both the dentist and the dental technician work together on the latest trends and techniques.

*Don't miss this excellent opportunity to be a part of one of the industry's largest meetings providing continuing education courses and an outstanding showcase of dental laboratory products and services.*

*Offering CDT/RC, AGD and State of Florida Approved Credits*

# 2018 SCHEDULE OF EVENTS

## THURSDAY – MAY 10

12:30 p.m. – 5:30 p.m. **FDLA Matheson Memorial Golf Tournament**  
Shingle Creek Golf Club  
*Sponsored by: Kulzer*

## FRIDAY – MAY 11

7:00 a.m. – 6:00 p.m. **Registration Desk Open**

7:30 a.m. – 8:00 a.m. **Morning Beverage Break**  
*Sponsored by: Ivoclar Vivadent, Inc.*

8:00 a.m. – 8:30 a.m. **Welcome, Board Installation and Awards Presentation**

8:30 a.m. – 9:30 a.m. **OPENING KEYNOTE ADDRESS**  
**EXPOSED: The Art and Science of Emotive Clinical and Dental Laboratory Photography**  
*Presented by: Dr. Miles R. Cone*  
*Sponsored by: GC America Inc.*

9:30 a.m. – 9:45 a.m. **Mid-Morning Beverage Break**

9:45 a.m. – 11:45 a.m. **OPTIONAL HANDS-ON WORKSHOP**  
**The LiSi PEKKbridge Hybrid: An Addition to Your Digital or Analog Workflow – PART I**  
*Presented by: Pheng Lor*  
*Sponsored by: GC America Inc. and Anaxdent*  
*(Pre-registration and additional fees required – Capacity 12. Special Note: This is a 2-day course, participants must attend both days to understand content and receive course credit.)*

9:45 a.m. – 11:45 a.m. **OPTIONAL HANDS-ON WORKSHOP**  
**The Basics of Doing Predictable Removable Dentures**  
*Presented by: Martin Schmid*  
*Sponsored by: Ivoclar Vivadent, Inc.*  
*(Pre-registration and additional fees required – Capacity 15.)*

9:45 a.m. – 11:45 a.m. **FRIDAY MORNING KEYNOTE**  
**Artistry and Technology for our Restorative Future**  
*Presented by: Peter Pizzi, CDT, MDT, FNGS*  
*Sponsored by: VITA North America*

12:00 p.m. – 12:45 p.m. **FDLA Luncheon**  
*Sponsored by: The Argen Corporation*

12:45 p.m. – 4:45 p.m. **HANDS-ON WORKSHOP (continued)**  
**The LiSi PEKKbridge Hybrid: An Addition to Your Digital or Analog Workflow – PART I**  
*Presented by: Pheng Lor*  
*(Pre-registration and additional fees required.)*

12:45 p.m. – 4:45 p.m. **HANDS-ON WORKSHOP (continued)**  
**The Basics of Doing Predictable Removable Dentures**  
*Presented by: Martin Schmid*  
*(Pre-registration and additional fees required.)*

1:00 p.m. – 3:00 p.m. **AFTERNOON KEYNOTE SESSION**  
**Perfecting Anterior All-Ceramic Full-Coverage Restorations: A Step-by-Step Approach**  
*Presented by: Nondas Vlachopoulos, N.V.*  
*Sponsored by: Kuraray America, Inc.*

3:00 p.m. – 6:00 p.m. **FDLA Expo Hall Open**

3:00 p.m. – 6:00 p.m. **Expo Hall Kickoff Reception**  
*Sponsored by: Zahn Dental*

6:00 p.m. – 8:00 p.m. **FDLA Friday Night Reception at the Renaissance Orlando at SeaWorld**  
*Reception Sponsored by: Affordable Dentures Dental Laboratories*  
*Reception Beverages Sponsored by: Aspen Dental*

## SATURDAY – MAY 12

7:00 a.m. – 3:30 p.m. **Registration Desk Open**

7:30 a.m. – 8:00 a.m. **Morning Beverage Break**  
*Sponsored by: Cardinal Rotary Instruments*

8:00 a.m. – 9:30 a.m. **A COURSES**

8:00 a.m. – 12:00 p.m. **OPTIONAL HANDS-ON WORKSHOP**  
**The LiSi PEKKbridge Hybrid: An Addition to Your Digital or Analog Workflow – PART II**  
*Presented by: Pheng Lor*  
*Sponsored by: GC America Inc. and Anaxdent*  
*(Pre-registration and additional fees required - Capacity 12. Special Note: This is a 2-day course, participants must attend both days to understand content and receive course credit.)*

8:00 a.m. – 12:00 p.m. **OPTIONAL HANDS-ON WORKSHOP**  
**Color Matching on an Anterior 3-Unit Zirconia Bridge**  
*Presented by: Nondas Vlachopoulos, N.V.*  
*Sponsored by: Kuraray America, Inc. and FDLA*  
*(Pre-registration and additional fees required – Capacity 15.)*

8:30 a.m. – 3:30 p.m. **FDLA Expo Hall Open**

9:30 a.m. – 11:00 a.m. **Expo Hall Break**

11:00 a.m. – 12:00 p.m. **B COURSES**

12:00 p.m. – 1:00 p.m. **Expo Hall Break / Lunch in Expo Hall**

12:00 p.m. – 1:00 p.m. **Gavel Club Luncheon (Invitation Only)**

1:00 p.m. – 2:00 p.m. **C COURSES**

1:00 p.m. – 3:00 p.m. **HANDS-ON WORKSHOP (continued)**  
**The LiSi PEKKbridge Hybrid: An Addition to Your Digital or Analog Workflow – PART II**  
*Presented by: Pheng Lor*  
*(Pre-registration and additional fees required.)*

1:00 p.m. – 3:00 p.m. **HANDS-ON WORKSHOP (continued)**  
**Color Matching on an Anterior 3-Unit Zirconia Bridge**  
*Presented by: Nondas Vlachopoulos, N.V.*  
*(Pre-registration and additional fees required.)*

1:00 p.m. – 5:30 p.m. **NBC Exams (CDT & RG Exams)**  
*(Candidates must pre-register with NBC)*

2:00 p.m. – 3:30 p.m. **Expo Hall Break / Afternoon Beverage Break**

3:30 p.m. – 4:30 p.m. **COURSE D1: Regulatory Standards**  
**Root Cause Analysis, Preventing Errors in the Dental Laboratory**  
*Presented by: Gary Morgan, CDT*  
*Sponsored by: Safelink Consulting*  
*(1 Hour Regulatory Standards Credit / 1 Hour Prevention of Medical Errors Credit)*



## Opening Keynote Address

### *EXPOSED: The Art and Science of Emotive Clinical and Dental Laboratory Photography*

*Presented by Dr. Miles R. Cone*

**CDT/RG: 1 hour of Scientific Credit • State of Florida: 1 hour of General Credit**

*Sponsored by:*



Dental photography serves as an effective tool for communication with colleagues, and as an emotional means of marketing to patients and clients in regards to our clinical services and laboratory products. This presentation will discuss the philosophy, equipment, and resources necessary for intraoral shade analysis, portraits, bench-top photography, and publishing outstanding high-end results with low-end consumer cost to social media and for scientific peer-review.



#### **Dr. Miles R. Cone**

Dr. Miles R. Cone is a graduate of Tufts University School of Dental Medicine, and completed a three-year Prosthodontic residency program while serving in the United States Army before being honorably discharged as a field grade officer in the rank of Major. In addition to achieving board certification and diplomate status within his specialty, Miles has also successfully challenged all the requirements necessary to earn his designation as a Certified Dental Technician. Miles has been frequently published in peer-reviewed literature, including the Journal of Prosthetic Dentistry, the Journal of General Dentistry, and the Journal of Dental Technology. Currently, Miles' career in civilian life revolves around his dual role as the owner of Nuance Dental Specialists, a private practice dental clinic limited to prosthetic dentistry in the heart of Portland, ME, and his role as Editor in Chief of the American College of Prosthodontists quarterly publication, The Messenger. When Miles is not at the chair, in the classroom or at the bench, he serves as a Key Opinion Leader and guest speaker for Amann Girrbach, GC America, Garrison Dental Solutions, Innovato Holdings, and Straumann Implants.

## Friday Morning Keynote

### *Artistry and Technology for our Restorative Future*

*Presented by Peter Pizzi, CDT, MDT, FNGS*

**CDT/RG: 2 hours of Scientific Credit • State of Florida: 2 hours of General Credit**

*Sponsored by:*



In today's evolving marketplace, the importance of utilizing technology is paramount to our success. Yet, the loss of the artistic process has hurt the dental market. Our goal for the future of the dental health industry is to provide esthetic, functional restorative options to support the physical and financial need of our patients. The technicians' role is much more demanding today as we must have an understanding of each of the material options, the technologies that can help us and a clear understanding of the diagnostic communication process to aid our dental partners in the future of our patient's success. Implant restorative and larger case options will be a large part of our future. The successful technicians will have a great understanding of each of these and not just be a piece worker in the process. Artistry and Technology can work well together.

#### **Peter Pizzi, CDT, MDT, FNGS**

As a dental educator for several years, Peter Pizzi has found an easy transition into the lecture/clinician circuit. His personal appreciation and expertise on all phases of Clinical/Laboratory techniques including Crown and Bridge, Ceramics, Implantology, muscle function, Color communication, Digital Photography and mandibular physiology have made him a source of knowledge and motivation for his peers. Peter's unique lecture ability and communication skills create a great learning environment.



Peter is the owner and manager of Pizzi Dental Studio, Inc. He is a Board member of ASMDT (Association of Master Dental Technicians) and a teacher and educator in the Master Dental Technician program at New York University. Peter has lectured to doctors and technicians throughout the United States, Europe and Asia on many different topics. He also continually studies with some of the world's top speakers and clinicians.

## Friday Afternoon Keynote Session

### Perfecting Anterior All-Ceramic Full Coverage Restorations: A Step-by-Step Approach

Presented by Nondas Vlachopoulos, N.V.

CDT/RG: 2 hours of Scientific Credit • State of Florida: 2 hours of General Credit

Today's aesthetic dentistry invests in a broad range of knowledge coming from many sciences and arts. The great contribution of modern technology in the field of materials and machinery, combined with today's most advanced manufacturing techniques is the key to satisfy the aesthetic and functional demands of patients.

The need for optimum results in the areas of aesthetics, function and biocompatibility, necessitates more and more the use of all-ceramic restorations, implants, and their combination. However, knowledge, talent, technique, artistic ability and perception of the dental technician remain the biggest and perhaps, the most important factor to create impeccable work. The dental technician must have the ability to assess all factors every single time in order to select a suitable patient therapy, and also to modify his technique wherever it is necessary for the design and execution, so that the best result can be obtained.

In this presentation, you will learn the step by step daily laboratory process and the way that art and technology in combination with artistic ability, manage to fulfill with great success excellent accuracy for the requirements of each individual case. Methods and handling for analysis and design will be described in order to understand and be able to select the proper solution for the optimal result.

#### Learning Aims & Objectives:

- Framework design and its importance to the increase of the Pressable restorations' aesthetics.
- Internal stain techniques and fluorescent increase on Zirconia restorations.
- Step by step layering on Feldspathic Veneers with the "One Bake Technique".

#### Nondas Vlachopoulos, N.V.

Nondas Vlachopoulos was born in Toronto, Canada. He graduated from the School of Dental Technology in 1985. He then acquired a BSc Hons from the School of Dental Technology of the Technological Educational Institution of Athens (1989). In 1990, he established his own dental laboratory, AestheticLab in Athens. Since 2001, he has been an Opinion Leader for Noritake Dental, Ivoclar Vivadent and MPF Brush Co. in Greece.



Since May 2014, he has been an editorial reviewer at the AACD's Journal of Cosmetic Dentistry (jCD). He specializes in aesthetic all-ceramic and implant restorations. His laboratory collaborates with the Dental School of the National and Kapodistrian University of Athens, Greece and its postgraduate programs of Dental Prosthodontics and Dental Surgery, as well as with the Department of Prosthodontics of the Eastman Institute of Oral Health of the University of Rochester, USA.

Since September 2015, he has been working on practical education of the Postgraduate program leading to a Master of Science Degree in dental Biomaterials/Materials of Dental Technology. The program is operated by The Department of Dental Technology of the Technological Institution of Athens in conjunction with the Dental School of the National & Kapodistrian University of Athens. Nondas Vlachopoulos leads many educational hands-on courses in Greece and worldwide (USA, South America, Europe, Asia and Middle East). He is an invited lecturer on dental aesthetics at international meetings and congresses and has published articles in Greek and international Dental Technology journals.



# 2018 COURSES & EXPO SCHEDULE – SATURDAY, MAY 12

	CERAMICS / CROWN & BRIDGE	REMOVABLES	IMPLANTS	LABORATORY MANAGEMENT	6 HR – OPTIONAL WORKSHOP	6 HR – OPTIONAL WORKSHOP
8:00 A.M. – 9:30 A.M.  A COURSES	<b>COURSE A1</b>  Keeping the Passion and Artistry Alive  James Choi  <i>Sponsored by:</i> Jensen Dental	<b>COURSE A2</b>  New Digital Denture Solutions  Alexander Wuensche, CDT  <i>Sponsored by:</i> Amann Girschbach	<b>COURSE A3</b>  Custom Abutment Digital Workflow  Max Schulze, CDT, MDT  <i>Sponsored by:</i> Straumann North America	<b>COURSE A4</b>  Preparing Your Lab for the Long Term  Darren Lemke  <i>Sponsored by:</i> LabStar Software	<b>Color Matching on an Anterior 3-unit Zirconia Bridge</b>  Nondas Vlachopoulos, N.V.  <i>Sponsored by:</i> Kuraray America, Inc. and FDLA	The LiSi PEKKbridge Hybrid: An Addition to Your Digital or Analog Workflow  (2-day workshop – cont'd from Friday)  Pheng Lor  <i>Sponsored by:</i> GC America Inc. and Anaxdent
8:30 A.M. – 11:00 A.M.	EXPO HALL OPEN (Expo Hall Opens at 8:30 A.M.)					
11:00 A.M. – 12:00 P.M.  B COURSES	<b>COURSE B1</b>  Your Future by Design. Artistry, Technology and Our Evolution  Peter Pizzi, CDT  <i>Sponsored by:</i> VITA North America	<b>COURSE B2</b>  Digital Workflow for Digital Denture Excellence... Analog, Digital or Both?  Bill Barton, MM, BS, CDT, TE  <i>Sponsored by:</i> Ivoclar Vivadent, Inc.	<b>COURSE B3</b>  Screw Retained - The Future of Dental Implants  Conrad J. Rensberg  <i>Sponsored by:</i> Dentsply Sirona Implants	<b>COURSE B4</b>  Profitability  Rob Gitman  <i>Sponsored by:</i> FDLA		
12:00 P.M. – 1:00 P.M.	EXPO HALL OPEN (Lunch in Expo Hall)					
1:00 P.M. – 2:00 P.M.  C COURSES	<b>COURSE C1</b>  Self-Induced Lab Headaches  Marlin Gohn, CDT  <i>Sponsored by:</i> The Argen Corporation	<b>COURSE C2</b>  Fundamentals for Successful Digital and Non-Digital RPD's  Amit Kamat, DMD, MS, FACP and Mike Janes  <i>Sponsored by:</i> Laboratory Distribution Network	<b>COURSE C3</b>  Predictable Advanced Implant Supported Dental Prosthetics ...a sequential method to technical fabrication.  Mark Williamson, CDT  <i>Sponsored by:</i> Panthera Dental	<b>COURSE C4</b>  Keeping More of Your Company Profits!  Shanna F. Morales, CPA  <i>Sponsored by:</i> FDLA	<b>Color Matching continued</b>  1:00 p.m. – 3:00 p.m.	<b>The LiSi PEKKbridge Hybrid: An Addition to Your Digital or Analog Workflow continued</b>  1:00 p.m. – 3:00 p.m.
2:00 P.M. – 3:30 P.M.	EXPO HALL OPEN					
3:30 P.M. – 4:30 P.M.  D COURSE	<b>COURSE D1</b>  Root Cause Analysis, Preventing Errors in the Dental Laboratory  Gary Morgan, CDT <i>Sponsored by:</i> Safelink Consulting  1 Hour Regulatory Standards / 1 Hour Prevention of Medical Errors					



FDLA is a State of Florida  
Approved CE Provider



## CDT/RG Credits

All Southern States Symposium & Expo  
courses have been approved by the National  
Board for Certification for CDT/RG Credits.



## AGD Credits

Approved PACE Program Provider FAGD/MAGD Credit  
Approval does not imply acceptance by a state or provincial  
board of dentistry or AGD endorsement.

## CERAMICS / CROWN & BRIDGE

### **COURSE # A1 – 8:00 A.M. – 9:30 A.M.**

**CDT/RG: 1.5 hours of Scientific Credit**

**State of Florida: 1.5 hours of General Credit**

#### **Keeping the Passion and Artistry Alive**

*by James Choi*

If you are responsible for creating part of or complete monolithic crowns, but are not happy with the process or end results you are achieving – this course is for you. In this course, using his unique perspective on the essential facets of ceramic art and technology, James will show you how to overcome the many variables that challenge successful restorative outcomes. He will start with traditionally layered ceramics and build from there.

If you need help with processing and finishing techniques that can have a huge impact on the esthetic outcome of your restorations, you should attend this course. This interactive course will illustrate NEW materials and techniques for achieving beautiful and predictable restorations that are sure to increase case acceptance through improved esthetics.

### **COURSE # B1 – 11:00 A.M. – 12:00 P.M.**

**CDT/RG: 1 hour of Scientific Credit**

**State of Florida: 1 hour of General Credit**

#### **Your Future by Design. Artistry, Technology and Our Evolution**

*by Peter Pizzi, CDT, MDT, FNGS*

We are at an exciting time where artistry, technology, products and processes are shaping our industry. In today's evolving marketplace, the importance of utilizing technology is paramount to our success. Yet, the loss of the artistic process has hurt the dental market. Our goals for the future of the dental health industry are to provide esthetic, functional restorative options to support the physical and financial needs of our patients. The technicians' role is much more demanding today as we must have an understanding of each of the material options, the technologies that can help us and a clear understanding of the diagnostic communication process to aid our dental partners in the future of our patients' success. As the clinical side of dentistry continues to evolve, we must grow and be able to create products for a broad spectrum of our patients. Understanding the diagnostic options and being able to select materials based on our comfort levels will be critical. Although creativity will always be our strength, how we get there must evolve. Combining our talents for producing the highest quality from traditional methods of fabricating restorations with the best digital technologies available on the market can be an unbeatable combination for satisfying your dentist clients.

Topics for this course will include: The Future Technician; Design your future [do not let it be designed for you]; Case management; Diagnostic communication; Preparation guided Ceramic layering and contours; The use of new technologies and The importance of photographic communication and perception.

### **COURSE # C1 – 1:00 P.M. – 2:00 P.M.**

**CDT/RG: 1 hour of Scientific Credit**

**State of Florida: 1 hour of General Credit**

#### **Self-Induced Lab Headaches**

*by Marlin Gohn, CDT*

This course will cover how to avoid self-induced headaches in the laboratory by eliminating simple, but common procedural mistakes. PFM to Zirconia to achieve consistent results, transitional shading zirconia and press to metal will also be discussed.

## REMOVABLES

### **COURSE # A2 – 8:00 A.M. – 9:30 A.M.**

**CDT/RG: 1.5 hours of Scientific Credit**

**State of Florida: 1.5 hours of General Credit**

#### **New Digital Denture Solutions**

*by Alexander Wuensche, CDT*

Where are we now and where are we going in the future? This course will inform the audience about the latest and most progressive digital denture solutions in the dental industry. Alexander will present preparation and assessment on the clinical side and will discuss the technical side for the dental technician in detail. Treatment options for fully edentulous patients as well as full arch implant reconstructions are a very actual topic at the everyday workplace. These new CAD/CAM modules and solutions are going to make the dental technicians' life easier and more predictable. Alexander will discuss material choices and options, as well as compare the new materials with materials currently being used for the full-arch denture and implant denture approach. Shade and mold consulting is a very important section for the success of a denture restoration and is part of the case communication between the dentist and the dental technician. Communication tools and their use will also be discussed in this presentation. You will hear in detail the use of a simplified system from impression taking, scanning and digital design of the case with final milling of the restoration. The two most accurate and economic sufficient systems will be explained as well. One is targeting a digital workflow and traditional processing in finishing the denture; the other one a full digital production and milling of the final full denture. Lastly, the economic advantages for the digital denture solution will be discussed.

After this presentation, the attendees should be able to understand: Case evaluation and decide which workflow to choose for the case; Treatment planning of the case with the clinician; Case preparation; Scanning and designing the digital denture; Finishing of the milled restoration and Making an economical evaluation about digital dentures.

*continued*



## REMOVABLES (continued)

### COURSE # B2 – 11:00 A.M. – 12:00 P.M.

CDT/RG: 1 hour of Scientific Credit

State of Florida: 1 hour of General Credit

#### Digital Workflow for Digital Denture Excellence...Analog, Digital or Both?

by Bill Barton, MM, BS, CDT, TE

This course will cover key components for the fabrication of a premium denture utilizing Ivoclar's Digital Denture Professional processes. It will include a comprehensive look at the clinical and laboratory innovative workflows as well as unique diagnostic instrumentation, equipment, and materials.

Attendees will gain a thorough understanding of the following: Precise clinical instrumentation and competencies ensure digital denture success; Unique innovative laboratory workflows for digital dentures to include some analog options; Advantages of fully monolithic milled teeth, specifically, for the immediate denture and immediate same-day implant (All-on 4/6) hybrid denture; and Exclusive 3Shape Digital Denture software add-ons, Ivoclar Digital Programill 5 & 7 milling units, and high-quality materials i.e. IvoBase CAD, SR Vivodent CAD, and ProArt CAD Wax.

### COURSE # C2 – 1:00 P.M. – 2:00 P.M.

CDT/RG: 1 hour of Scientific Credit

State of Florida: 1 hour of General Credit

#### Fundamentals for Successful Digital and Non-Digital RPD's

by Amit Kamat, DMD, MS, FACP and Mike Janes

Amit Kamat, DMD, MS, FACP, and Mike Janes (Owner Sorrento Smiles Dental Lab) will share their fundamentals for predictable RPD outcomes. Topics will include basic preparation principles, material options, as well as digital and non-digital manufacturing techniques. The two speakers have extensive knowledge on the RPD workflow that includes incorporating designs that plan for future implant support as well.

## IMPLANTS

### COURSE # A3 – 8:00 A.M. – 9:30 A.M.

CDT/RG: 1.5 hours of Scientific Credit

State of Florida: 1.5 hours of General Credit

#### Custom Abutment Digital Workflow

by Max Schulze, CDT, MDT

Digital dentistry is changing the way dental laboratory technicians interact with one another to plan prosthetic restorations. Incorporation of CAD/CAM technology for restorative solutions can help deliver natural-looking, esthetic results for patients. This course will review a systematic approach to designing custom abutments using digital technology and the many benefits available to the entire dental team when using digital dentistry solutions.

At the conclusion of this course, attendees will be able to: Recognize how to incorporate recent technological advances to design custom abutments; understand what various materials and processes are available for custom abutments, copings and crowns; and use digital dental implant planning to manage the soft tissue zone with a provisional prior to designing a custom abutment.

### COURSE # B3 – 11:00 A.M. – 12:00 P.M.

CDT/RG: 1 hour of Scientific Credit

State of Florida: 1 hour of General Credit

#### Screw Retained – The Future of Dental Implants

by Conrad J. Rensburg

In this lecture, Mr. Rensburg will discuss the latest implant supported and retained options available for restoring the edentulous and partially edentulous arch.

Over the last decade, we have witnessed a true evolution in the implant restorative field. With multiple studies now pointing to peri-implantitis, caused by cement clean-up being a major cause of implant failure, a true demand for a functional and esthetic screw retained solution has developed. This lecture will discuss non-implant specific options and focus on how to treat our patients more efficiently by utilizing these innovative restorative protocols.

By discussing these advancements in technology, the restorative team will be able to effectively determine the best restorative avenue, customized to every individual's needs. Today's technology allows our restorative team a multitude of options. By showing case studies, this lecture will give the restorative team the knowledge they need to best treat their patients using these innovative products.





## **COURSE # C3 – 1:00 P.M. – 2:00 P.M.**

CDT/RG: 1 hour of Scientific Credit

State of Florida: 1 hour of General Credit

### **Predictable Advanced Implant Supported Dental Prosthetics ...a sequential method to technical fabrication.**

*by Mark Williamson, CDT*

In this course, Mark will share his techniques in detail from start to finish on how he constructs implant supported prosthetics in a fixed/detachable hybrid bar and the RE Bourke bar. Observe how he breaks down each step to create an award winning Prosthesis (i.e. Panthera's Master Cup 2017). A simple approach to complex implant dental prosthetics utilizing CAD/CAM technology through Panthera Dental makes your final restorations a success for your clients and their patients. Mark's approach can easily be integrated into your restorative cases immediately. He will also share information on materials used, tools, and trade techniques that are available today.

## **LABORATORY MANAGEMENT**

### **COURSE # A4 – 8:00 A.M. – 9:30 A.M.**

CDT/RG: 1.5 hours of Professional Development Credit

State of Florida: 1.5 hours of General Credit

### **Preparing Your Lab for the Long Term**

*by Darren Lemke*

Looking at your lab for the long term will help lab owners make business decisions that will guide them to their end goal of selling to an outside entity or to someone within the lab itself. Lemke will touch on the guidelines needed to have a successful career.

### **COURSE # B4 – 11:00 A.M. – 12:00 P.M.**

CDT/RG: 1 hour of Professional Development Credit

State of Florida: 1 hour of General Credit

### **Profitability**

*by Rob Gitman*

This course will review the use of key performance indicators to increase laboratory productivity and profitability. Key performance indicators help to measure a laboratory's internal processes and are critical in meeting and/or exceeding both customer expectations and the laboratory's strategic goals.

## **COURSE # C4 – 1:00 P.M. – 2:00 P.M.**

CDT/RG: 1 hour of Professional Development Credit

State of Florida: 1 hour of General Credit

### **Keeping More of Your Company Profits!**

*by Shanna F. Morales, CPA*

All businesses need to maximize their available opportunities. In this program, we've compiled our best tax-saving ideas for 2018. Some strategies are "tried and true," while others have been tailored to address the changes in tax laws for the current year. We'll discuss how to implement these ideas on both the corporate and individual levels.

Topics covered include: Tax credits and deductions; Depreciation; Retirement planning and Ordinary and Necessary Business deductions. We will also discuss new audit focus areas for the IRS.

## **REGULATORY STANDARDS / PREVENTION OF MEDICAL ERRORS**

### **COURSE # D1 – 3:30 P.M. – 4:30 P.M.**

CDT/RG: 1 hour of Regulatory Standards Credit

State of Florida: 1 hour of Prevention of Medical Errors Credit

### **Root Cause Analysis, Preventing Errors in the Dental Laboratory**

*by Gary Morgan, CDT*

The goal of every dental laboratory is to achieve customer satisfaction with the products and services provided to the dental client and the patient. This seminar will show how using Root Cause Analysis and determining and implementing Corrective Actions and Preventive Actions will help reduce both internal and external remakes. Customer complaints concerning product service issues can be reduced as well. Creating useful metrics and analyzing the data for trend analysis will be discussed.



## The Basics of Doing Predictable Removable Dentures



*Presented by: Martin Schmid*

**CDT/RG: 6 hours of Scientific Credit**

**State of Florida: 6 hours of General Credit**

### Workshop Schedule:

**9:45 a.m. – 11:45 a.m.** Lecture and Interactive Hands-on Demonstration

**12:00 p.m. – 12:45 p.m.** **FDLA Luncheon** (included in registration fees)

**12:45 p.m. – 4:45 p.m.** Lecture and Interactive Hands-on Demonstration

**T**his lecture and interactive hands-on demonstration will cover the following:

- Review the Myostatic Outline and applications for proper fit, function and esthetics
- Proper use of articulator, accessories and mounting of cast
- Learn how to set anterior teeth with function & esthetics
- Ease of setting posterior teeth with predictability
- Advantage of injecting acrylic verses flask & press
- Define predictable results and superior esthetics

*Sponsored by:*



Since this is a lecture and interactive hands-on demonstration, participants will not need to bring any additional materials.

(Note: Pre-registration and additional fees required – Capacity 15. Participants must pre-register by 4/18/2018.)

Registration Includes: Friday morning Awards Ceremony & Opening Keynote Address, Friday Only Registration for Hands-on Workshop, Friday Lunch, Friday Night Reception, admission to the Expo on Friday & Saturday.

# OPTIONAL HANDS-ON WORKSHOP – FRIDAY, MAY 11 & SATURDAY, MAY 12

## The LiSi PEKKbridge Hybrid: An Addition to Your Digital or Analog Workflow – Parts I & II



*Presented by Pheng Lor*

**CDT/RG: 12 hours of Scientific Credit**

**State of Florida: 12 hours of General Credit**

(Special Note: This is a 2-day course, participants must attend both days to understand content and receive course credit.)

### Workshop Schedule:

#### FRIDAY, MAY 11

**9:45 a.m. – 11:45 a.m.** Hands-on Workshop

**12:00 p.m. – 12:45 p.m.** **FDLA Luncheon**  
(included in registration fees)

**12:45 p.m. – 4:45 p.m.** Hands-on Workshop

#### SATURDAY, MAY 12

**8:00 a.m. – 12:00 p.m.** Hands-on Workshop

**12:00 p.m. – 1:00 p.m.** **Lunch & Expo Hall Break**  
(included in registration fees)

**1:00 p.m. – 3:00 p.m.** Hands-on Workshop

*continued opposite page*

## Color Matching on an Anterior 3-Unit Zirconia Bridge



Presented by Nondas Vlachopoulos, N.V.

CDT/RG: 6 hours of Scientific Credit

State of Florida: 6 hours of General Credit

### Workshop Schedule:

8:00 a.m. – 12:00 p.m. Hands-on Workshop

12:00 p.m. – 1:00 p.m. Lunch & Expo Hall Break (included in registration fees)

1:00 p.m. – 3:00 p.m. Hands-on Workshop

We will first have the participants select the preferable tooth shade to be copied, just like working on a LIVE case. This can be done either by selecting between some different tooth photos that I will bring with me or by choosing one of the participants' teeth (and we will take intraoral photos with which we will proceed the demonstration).

The following topics will be discussed and analyzed:

- Color selection
- Internal stratification
- Chroma
- Opacity
- Value
- Transparency
- Translucency
- Opalescence
- Morphology
- Surface Texture

Then we proceed with the ceramic powder selection and the demonstration of the ceramic stratification following the One Bake Technique. After baking the ceramic, the demonstration continues with the adjustment of the interproximal contact surfaces – grinding – morphology – surface texture – staining & polishing.

Participants should bring:

Each participant should bring personal tools for the ceramic layering (palette, brushes, etc).

Sponsored by:

**kuraray**

*Noritake*

(Note: Pre-registration and additional fees required – Capacity 15. Participants must pre-register by 4/18/2018.)

Registration Includes: Saturday Only Registration for Hands-On Workshop, Saturday Lunch, Saturday Regulatory Standards, admission to the Expo on Friday & Saturday.

## OPTIONAL HANDS-ON WORKSHOP – FRIDAY, MAY 11 & SATURDAY, MAY 12

### The LiSi PEKKbridge Hybrid: An Addition to Your Digital or Analog Workflow - Parts I & II

#### Course Objectives:

- Learn the nuances and benefits of Pekkton high-performance polymer implant frames, with GC Initial® LiSi Press crowns and pink composite
- Review best practices for case planning, verification, temporization, etc. in full-arch implant cases
- Understand analog and digital frame design options, and protocols for both pressing and milling Pekkton frames
- Enhance esthetics of ceramic crowns using GC Initial LiSi Press, GC Initial LiSi layering powders and GC Initial Luster Pastes (hands-on practice)
- Learn the following steps to fabricate final implant restorations (hands-on practice):
  - Pekkton surface preparation
  - Cementation of titanium cylinders / abutments
  - Cementation of LiSi crowns
- Elevate pink esthetics using pink composites and light cure stains and a novel clear glaze application technique (hands-on practice)

#### Participants Should Bring:

Porcelain and composite build up tools and a hand piece with burs.

(Note: Pre-registration and additional fees required – Capacity 12. Participants must pre-register by 4/18/2018.)

Registration Includes: Friday morning Awards Ceremony & Opening Keynote Address, Friday Lunch, Friday Night Reception, Saturday lunch in the expo hall and admission to the Expo on Friday & Saturday. (Special Note: This is a 2-day course, participants must attend both days to understand content and receive course credit.)

Sponsored by:

**anaxDENT**  
north america

**GC**



## HANDS-ON TABLE CLINICS IN EXPO HALL

# BACK BY POPULAR DEMAND!

**F**DLA will provide the opportunity to earn CE credits during the expo hall hours again this year. The table clinics will take place in the sponsored island booths during expo hall hours on both Friday, May 11 and Saturday, May 12. The following sponsors will be presenting table clinics in the Expo Hall:



**Topic, speaker and schedule for each table clinic will be listed in the Symposium onsite program.**

*Each participant will earn 1 hour of Scientific Credit (CDT/RG) and 1 hour of General Credit through the State of Florida per course.*

## FDLA MATHESON MEMORIAL GOLF TOURNAMENT

### SHINGLE CREEK GOLF CLUB

9939 Universal Boulevard, Orlando, FL 32819

407.996.9933 [www.ShingleCreekGolf.com](http://www.ShingleCreekGolf.com)

**Thursday, May 10 • 12:30 p.m. – 5:30 p.m.**

*(Additional registration and fees required.)*

**S**hingle Creek Golf Club presents challenges to players of all levels and has consistently been rated as one of Orlando's best golf courses since opening in 2003. In 2016, the golf club partnered with the renowned Arnold Palmer Design Company to create a new Arnold Palmer Signature Golf Course. The course is known for its large, undulating greens, plush fairways and an abundance of water hazards. Make plans to participate in this great networking opportunity!

#### *Tournament Fees Include:*

- Greens/Cart fees
- Unlimited practice balls
- Boxed lunch for each golfer
- Prizes awarded for top scoring team, longest drive and closest to the pin

Sponsored by:



**KULZER**  
MITSUI CHEMICALS GROUP



(as of 1/12/18)

## KEYNOTE SPEAKERS



### FRIDAY LUNCHEON



### MATHESON MEMORIAL GOLF TOURNAMENT



**KULZER**  
MITSUI CHEMICALS GROUP

### EXPO KICKOFF RECEPTION



### FRIDAY NIGHT RECEPTION



### FRIDAY NIGHT RECEPTION BEVERAGES



### ROOM KEY CARDS



### TRADE SHOW BAGS



### FRIDAY MORNING BREAK



### SATURDAY MORNING BREAK



### ATTENDEE LANYARDS



### FRIDAY NIGHT RECEPTION PRIZES



## EXHIBITORS

(as of 1/12/18)

3D BioCAD  
Aegis Dental Network  
Affordable Dentures Dental Laboratories  
Aidite(Qinhuangdao)Technology Co., Ltd.  
Americana Dental  
The Argen Corporation  
Aspen Dental  
Atlanta Dental Supply  
BEGO USA  
Brasseler USA  
Cardinal Rotary Instruments  
Cora Refining  
DAL DT Technologies  
Devine Dental Supplies

Garfield Refining Company  
GC America Inc.  
Ivoclar Vivadent, Inc.  
Jensen Dental  
Kettenbach  
Komet USA  
Mastercut Tool Corp.  
McFatter Technical College  
NADL / NBC / FDLT  
Nobel Biocare  
Nobilium  
Nowak Dental  
Panthera Dental  
Proto3000 Inc.

Renfert USA  
Shanghai Union Technology Corporation  
SNOWROCK USA  
Sterngold  
Straumann  
TruAbutment Inc.  
VITA North America  
Whip Mix Corporation  
White Peaks Dental Solutions USA  
XPdent Corp  
Zahn Dental  
ZIMMER BIOMET Dental  
Zirkonzahn USA, Inc.

## Join us in Building the Future of Dental Technology

At the 2018 Southern States Symposium & Expo, FDLA will join together with the Foundation for Dental Laboratory Technology to increase awareness of the opportunities for enhancing education in the industry.

The Foundation is a 501(c)(3) educational non-profit created in 2008 to advocate and raise awareness of the necessity of dental laboratory technology education for dental technicians and other effected members of the dental team. The Foundation provides grants and scholarships to interested candidates for advanced education and develops educational programs that are relevant and accessible to both dental technicians working in the laboratory as well as dental laboratory technology students.

### *My Commitment Pledge*

**W**e need your help. Make an investment in the future of your profession by contributing to The Foundation. As a contributor, you will be recognized by having your name listed on our website [www.dentallabfoundation.org](http://www.dentallabfoundation.org), but more importantly, you will carry the knowledge that you made an investment that will positively impact the future of your profession.

### **Donor Information:** (Who and how you want your name recognized. This information may be published.)

(Salutation: ☐ Mr. ☐ Ms. ☐ Mrs. ☐ Dr. ☐ Other \_\_\_\_\_ ) Name \_\_\_\_\_  
☐ CDT ☐ RG ☐ RDT ☐ DDS ☐ DMD ☐ Other: \_\_\_\_\_

Company \_\_\_\_\_ ☐ CDL ☐ DAMAS

Address \_\_\_\_\_

City/State/Zip \_\_\_\_\_

Phone \_\_\_\_\_ Fax \_\_\_\_\_

Email \_\_\_\_\_

### **Payment Method:** (Check one option below)

☐ Please find enclosed check payable to the *Foundation for Dental Laboratory Technology* in the amount of \$ \_\_\_\_\_. (For a one-time donation.)

☐ Please contact me regarding a multi-year contribution.

☐ Please charge my credit card (☐ VISA ☐ MasterCard ☐ AMEX) in the amount of \$ \_\_\_\_\_. (For a one-time donation.)

Card# \_\_\_\_\_ Exp. Date \_\_\_\_\_ Security Code\* \_\_\_\_\_  
\*3-digit number on reverse side of most cards, 4-digit number on front for AMEX only

Cardholder Name \_\_\_\_\_ Phone # \_\_\_\_\_

Billing Address (if different from above) \_\_\_\_\_

Signature \_\_\_\_\_ Date \_\_\_\_\_

*The Foundation for Dental Laboratory Technology is exempt under section 501(c)(3) of the Internal Revenue Code, making your contributions tax-deductible.*

**The Foundation for Dental Laboratory Technology**





Introducing

## MEMBERSHIP LEVELS

Get The Best Value  
For Your Dollar



With our new membership levels, you can **COVER ALL OF YOUR EMPLOYEES** as members of FDIA under your laboratory's membership.



The level you choose allows that many employees to **ATTEND OUR ANNUAL SYMPOSIUM, DISTRICT WORKSHOPS, AND OTHER MEETINGS** at the greatly reduced FDIA Member rate.

Each level of membership is designed to **SAVE YOU MONEY** and provide membership benefits to as many employees as you choose to cover.



Your laboratory will be eligible for all of the **MEMBERSHIP BENEFITS** listed on the next page. Each employee under your laboratory's membership will also receive *focus* magazine.



Select Your Level

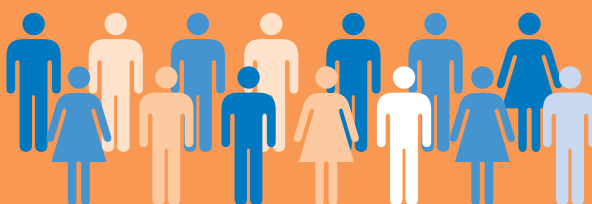
15+  
Members



\$750

Unlimited savings\*

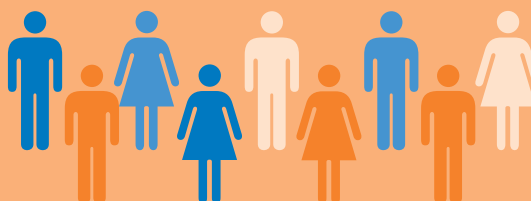
10-14  
Members



\$535

up to  
\$110 savings\*

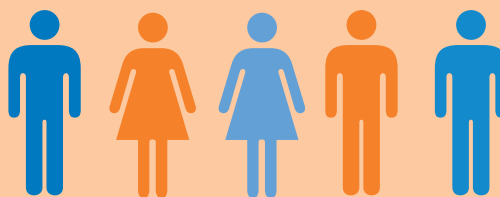
6-9  
Members



\$435

up to  
\$150 savings\*

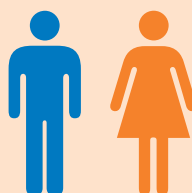
3-5  
Members



\$335

up to  
\$90 savings\*

1-2  
Members



\$235

up to  
\$40 savings\*

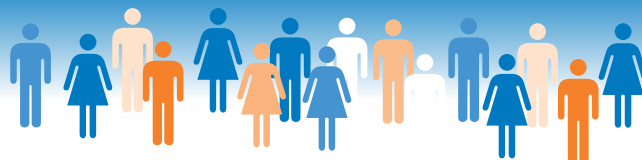
\* Estimated savings based on previous discount membership incentive plans.



# Member Benefits



Your membership in the Florida Dental Laboratory Association (FDLA) will bring you a return many times greater than your investment. The association's proven programs provide members with the tools they need to operate their businesses successfully.



## EDUCATION

As the leader of dental laboratory technology continuing education within the state of Florida, we are committed to helping laboratories formulate a business that will grow, meet the requirements mandated by Florida law and help Certified Dental Technicians (CDT) and Certified Dental Laboratories (CDL) maintain their certification. FDLA members are eligible to receive discounted rates on all continuing education.



**District Workshops** – Rotating around the state of Florida, FDLA District Workshops offer laboratory owners and technicians/staff the opportunity to receive continuing education credits year round on a variety of topics including the required “Florida Laws and Rules for Dental Laboratories” course.

**Online Education** – FDLA offers online education, including the mandatory “Florida Laws and Rules for Dental Laboratories” course, on our Website [www.fdma.net](http://www.fdma.net).

**Southern States Symposium & Expo presented by FDLA** – As the largest not for profit dental laboratory meeting in the country, attendees have an opportunity to meet with vendors of dental laboratory products/services to discuss equipment, supplies and techniques that can improve their business. A wide range of technical clinics are scheduled to provide members with the most current industry standards and continuing education.

## LEGISLATIVE/ GOVERNMENT RELATIONS

FDLA works with several agencies to modify and strengthen existing laws affecting dental laboratories and ensure that such regulations strike a balance between patient safety and ease of compliance. FDLA members are provided critical updates and reminders for important legislation, deadlines and regulatory alerts.

**Florida State Laws Affecting Dental Laboratories Manual** – FDLA has developed a manual defining the state laws affecting dental laboratories. This manual explains in detail: continuing education, data required on prescriptions, materials disclosure and point of origin requirements necessary with all communication and case work executed between the dentist and laboratory.

**Continuing Education Requirement** – The state of Florida mandates that each laboratory in Florida must receive 18 hours of Florida approved continuing education credit every two years. FDLA is an approved provider and offers a variety of courses – including the mandatory course on “Florida Laws and Rules for Dental Laboratories.”



## BUSINESS SERVICES

(available to laboratory owners)

### Human Resource Hotline –

The average dental laboratory does not have the workforce or means to hire a human resources manager. Even larger laboratories that have a human resources manager may need some advice on tough situations from time to time. FDLA members receive human resources telephone consultation services **FREE OF CHARGE!**



### Credit Card Payment Processing –

FDLA member laboratories are eligible to receive discounted rates on credit and debit card processing. Our provider specializes in creating card acceptance programs specifically for the dental industry.

## COMMUNICATION

**focus Magazine** – FDLA's quarterly *focus* Magazine is the most widely read state dental laboratory association publication. It provides updates on crucial industry information, new technology, laboratory management and other issues of vital concern. FDLA members receive a complimentary subscription as part of their membership.

**Website** – FDLA's Website, [www.fdma.net](http://www.fdma.net), has comprehensive information on pertinent industry updates as well as conference registration forms, an online directory that enables dentists to look up FDLA member laboratories and other links.





# Florida Dental Laboratory Association Membership Application

Any commercial dental laboratory registered by the State of Florida Department of Health is eligible. Membership shall be in the name of the laboratory as registered by the State of Florida. The owner, partner or designated representative shall represent the laboratory in meetings and is eligible for elective office and voting privileges. Dental laboratories located outside of the state of Florida may join as an Affiliate member using this form.

Name: \_\_\_\_\_ ☐ CDT

Laboratory Name: \_\_\_\_\_ ☐ CDL ☐ DAMAS

Laboratory Owner Name: \_\_\_\_\_ ☐ CDT

Address: \_\_\_\_\_

City: \_\_\_\_\_ State: \_\_\_\_\_ Zip: \_\_\_\_\_

Phone: \_\_\_\_\_ Toll Free: \_\_\_\_\_ Fax: \_\_\_\_\_

E-mail: \_\_\_\_\_ Website: \_\_\_\_\_

Florida Department of Health Laboratory License Number: (if applicable) \_\_\_\_\_

## Payment Information

Total Enclosed: \$ \_\_\_\_\_

☐ Check, payable to FDIA

☐ Visa

☐ MasterCard

☐ AMEX

Card No.: \_\_\_\_\_ Security Code\*: \_\_\_\_\_ Expires: \_\_\_\_\_

\*This is the three digit number found on the back of your card in the signature area. AMEX - This is the four digit number found on the front of your card.

Name as it appears on card: \_\_\_\_\_ Signature: \_\_\_\_\_

Credit Card Billing Address: \_\_\_\_\_

**RETURN APPLICATION TO FDIA** at: 325 John Knox Road Ste L 103, Tallahassee, FL 32303 OR Fax with credit card payment to (850) 222-3019.

Check One: ✓

☐ **1-2 Members: \$235**

☐ **3-5 Members: \$335**

☐ **6-9 Members: \$435**

☐ **10-14 Members: \$535**

☐ **15+ Members: \$750**

## Your Laboratory Members:

Please list the name and email address of your employees based on the membership level you chose.  
(Please note: the primary contact that you listed above will be included in the total count.)

Name: \_\_\_\_\_ Email: \_\_\_\_\_

Name: \_\_\_\_\_ Email: \_\_\_\_\_

Name: \_\_\_\_\_ Email: \_\_\_\_\_

Name: \_\_\_\_\_ Email: \_\_\_\_\_

Name: \_\_\_\_\_ Email: \_\_\_\_\_

Name: \_\_\_\_\_ Email: \_\_\_\_\_

Name: \_\_\_\_\_ Email: \_\_\_\_\_

Name: \_\_\_\_\_ Email: \_\_\_\_\_

Name: \_\_\_\_\_ Email: \_\_\_\_\_

Name: \_\_\_\_\_ Email: \_\_\_\_\_

Name: \_\_\_\_\_ Email: \_\_\_\_\_

Name: \_\_\_\_\_ Email: \_\_\_\_\_

Name: \_\_\_\_\_ Email: \_\_\_\_\_

Name: \_\_\_\_\_ Email: \_\_\_\_\_

Name: \_\_\_\_\_ Email: \_\_\_\_\_

Name: \_\_\_\_\_ Email: \_\_\_\_\_

## Or Join as a Student:

Open to any students at Florida schools offering a dental technology program.

☐ **FDIA Student Membership: \$15**

Select Your Level



# HOTEL INFORMATION

## Renaissance Orlando at SeaWorld

The 2018 FDLA Southern States Symposium & Expo will be held at the Renaissance Orlando at SeaWorld, located across from SeaWorld® and adjacent to Aquatica and Discovery Cove. From the moment you step into the resort's lush, tropical landscape, you will feel relaxed and refreshed as you immerse yourself into the flowing, aquatic-themed design. Enjoy modern accommodations, family-friendly amenities and the on-site waterpark R Aqua Zone. Guests can enjoy a cocktail by the pool, pampering treatment at the spa or explore International Drive and much more.

The FDLA has secured a special reduced rate of \$157 inclusive of the resort fee for FDLA attendees. Also included in your rate are 50% discount on in-room high speed internet, complimentary self-parking and access to 24-hour fitness center. Make your hotel reservations directly with the Renaissance by calling **407.351.5555**. Be sure to mention you are with FDLA and make your reservations by **Wednesday, April 18, 2018** to receive this special reduced rate. The association can only reserve a certain number rooms at the discounted rate. Once the room



block is sold out, even if that day is prior to the cutoff date, a higher prevailing room rate will apply. Make your reservations today! NOTE: The association can only reserve a certain number of rooms at the discounted rate. Once the room block is sold out, even if that day is prior to the cutoff date, a higher prevailing room rate will apply. Make your reservations today!

*Please continue your support of the FDLA Southern States Symposium & Expo by staying at the Renaissance Orlando at SeaWorld, the appointed FDLA host hotel.*




### Great Benefits of Staying at the FDLA Host Hotel:

- Special reduced rate of \$157 for FDLA!
- The expo hall is minutes away from your hotel room.
- Increased networking time with attendees in the hotel's restaurants and lounge areas!
- Across the street from SeaWorld Orlando

**Need additional information on the 2018 Symposium & Expo? Please visit [www.fdma.net](http://www.fdma.net).**

## REGISTRATION INFORMATION AND EXPO POLICIES

### 3 Ways to Register:

-  **ONLINE:** Go to [www.fdma.net](http://www.fdma.net), click on the conference tab, then register online. Use your Master Card, Visa or AMEX.
-  **FAX:** This form with credit card information to **(850) 906-0077**
-  **MAIL:** Registration Form, **Postmarked by April 18, 2018** to: 2018 Southern States Symposium & Expo (FDLA), 1401 Maclay Commerce Dr., Tallahassee, Florida 32312



**Refund Policy:** Written notification is required for all refunds. Refund requests received by April 18, 2018 will receive a refund less a \$25 administrative fee. No refunds will be paid after April 18, 2018.

**Age Restrictions & Stroller Policy:** No children in strollers or children under the age of 15 will be allowed access into the exhibit hall during booth setup, show hours or during booth dismantling.

**ADA:** If you have special needs that require accommodations, please notify FDLA in writing no later than April 18, 2018.

**Southern States Symposium & Expo Dress Code:** The dress code for the 2018 Southern States Symposium & Expo daytime workshops and courses is business casual (no t-shirts, tank tops or flip flops please).

**Questions?** For more information, contact FDLA's Southern States Symposium office by phone at 866.873.3352 or email [fdlareg@mcraemeetings.com](mailto:fdlareg@mcraemeetings.com).

# 2018 SOUTHERN STATES SYMPOSIUM & EXPO REGISTRATION FORM

Please print or type. Please photocopy form for additional registrants. See page 18 for options to register.



First Name: \_\_\_\_\_ Last Name: \_\_\_\_\_

Are you an authorized buyer for your dental laboratory? ☐ YES ☐ NO ☐ CDT ☐ RG ☐ DDS ☐ DMD ☐ Other: \_\_\_\_\_

State of FL Dental Laboratory/Dentist License Number (if applicable): \_\_\_\_\_ CDT/RG Number (if applicable): \_\_\_\_\_

Laboratory, Dental Practice or Organization: \_\_\_\_\_ ☐ CDL ☐ DAMAS

Address: \_\_\_\_\_

City: \_\_\_\_\_ State: \_\_\_\_\_ Zip: \_\_\_\_\_

Phone: \_\_\_\_\_ E-mail: \_\_\_\_\_

**NOTE: For CDT/RG Registrations, you MUST include your CDT/RG Number to receive CE credits for attending the courses.**

## FULL REGISTRATION – MAY 11 & 12

Includes: Friday Keynote Sessions, Friday Lunch, Friday Night Reception, choice of Saturday courses, Saturday Lunch, unlimited admission to the Expo on Friday and Saturday

- ☐ FDLA Member..... First Member: \$295 (\$325 after 4/18/18)  
☐ Each Additional Member from Same Lab: \$275 (Pre-registration Only)  
☐ CDTs and Dentists.....\$345 (\$375 after 4/18/18)  
☐ Non-Member.....\$550

- ☐ Add Friday Workshop\* .....\$150  
☐ Add Saturday Workshop\* .....\$150  
\*(Full Registration Required – Must Pre-register to attend)

Indicate Workshop(s): \_\_\_\_\_

Subtotal Due: \$ \_\_\_\_\_

## FRIDAY ONLY REGISTRATION – MAY 11

Includes: Friday Keynote Sessions, Friday Lunch, Friday Night Reception, unlimited admission to the Expo on Friday and Saturday

- ☐ FDLA Member..... First Member: \$195 (\$225 after 4/18/18)  
☐ Each Additional Member from Same Lab: \$175 (Pre-registration Only)  
☐ CDTs and Dentists.....\$245 (\$275 after 4/18/18)  
☐ Non-Member.....\$450

Subtotal Due: \$ \_\_\_\_\_

## SATURDAY ONLY REGISTRATION – MAY 12

Includes: Choice of Saturday courses, Saturday Lunch, unlimited admission to the Expo on Friday and Saturday

- ☐ FDLA Member..... First Member: \$175 (\$200 after 4/18/18)  
☐ Each Additional Member from Same Lab: \$155 (Pre-registration Only)  
☐ CDTs and Dentists.....\$225 (\$250 after 4/18/18)  
☐ Non-Member.....\$450

Subtotal Due: \$ \_\_\_\_\_

## EXHIBITS ONLY REGISTRATION

(Pass good for entry into Expo either Friday, Saturday or both. Must register and receive a name badge to enter Expo Hall.)

- ☐ FDLA Member.....\$0 No Charge ☐ Non-Member.....\$50

## ADDITIONAL EVENT OPTIONS

- ☐ FDLA Friday Luncheon .....\$35 each ticket  
☐ FDLA Friday Night Reception .....\$50 each ticket  
☐ Saturday Box Lunch.....\$35 each ticket

## GOLF TOURNAMENT – THURSDAY – MAY 10

### FDLA Matheson Memorial Golf Tournament

(See pg. 12 for more details. Must register and pay in advance.)

- ☐ Conference Registrant or Exhibitor.....\$99  
☐ Golf Only.....\$115

Handicap/Estimated Average Score \_\_\_\_\_

Foursome Requests: \_\_\_\_\_

**HANDS-ON WORKSHOPS** You must register in advance by April 18, 2018 for all Hands-on Workshops. Workshops have limited capacities and are on a first-come, first-served basis. Onsite registrations will not be accepted. See pages 10-11 for additional workshop information.

## 6 HR - THE BASICS OF DOING PREDICTABLE REMOVABLE DENTURES FRIDAY – MAY 11

Includes: Friday Only Registration for Hands-on Workshop, Friday Lunch, Friday Night Reception, admission to the Expo on Friday and Saturday

- ☐ FDLA Member.....\$250 ☐ Non-Member.....\$325  
☐ CDTs and Dentists.....\$275

## 6 HR – COLOR MATCHING ON AN ANTERIOR 3-UNIT ZIRCONIA BRIDGE SATURDAY – MAY 12

Includes: Saturday Only Registration for Hands-on Workshop, Regulatory Standards Course, Saturday Lunch, admission to the Expo on Friday and Saturday

- ☐ FDLA Member.....\$250 ☐ Non-Member.....\$325  
☐ CDTs and Dentists.....\$275

## 2-DAY WORKSHOP – THE LISI PEKKBRIDGE HYBRID: AN ADDITION TO YOUR DIGITAL OR ANALOG WORKFLOW MAY 11 & MAY 12

Includes: Friday & Saturday Only Registration for Hands-on Workshop, Friday Lunch, Friday Night Reception, Saturday Lunch, admission to the Expo on Friday and Saturday. NOTE: This is a 2-day course, participants must attend both days to understand content and receive course credit.

- ☐ FDLA Member.....\$495 ☐ Non-Member.....\$595  
☐ CDTs and Dentists.....\$525

Subtotal Due: \$ \_\_\_\_\_

## Payment:

**SUB-TOTAL DUE FOR SYMPOSIUM & EXPO: \$** \_\_\_\_\_

### FOUNDATION FOR DENTAL

**LABORATORY TECHNOLOGY DONATION: \$** \_\_\_\_\_

**TOTAL ENCLOSED: \$** \_\_\_\_\_

☐ Check (payable to FDLA) Check # \_\_\_\_\_

**Credit Card:** ☐ MC ☐ Visa ☐ AmEx Charge \$ \_\_\_\_\_

CC #: \_\_\_\_\_

Exp: \_\_\_\_\_ Security Code\*: \_\_\_\_\_

Cardholder Signature: \_\_\_\_\_

Print Name: \_\_\_\_\_

Billing Address (if different from above): \_\_\_\_\_

\*The 3 digit number on the back of the card. AMEX: The 4 digit number on the front of your card.

Please refer to page 18 for registration information and expo policies.

For more information, contact FDLA's Southern States Symposium office by phone at 866.873.3352 or email [fdlareg@mcraemeetings.com](mailto:fdlareg@mcraemeetings.com).





2018 Southern States Symposium  
& Expo, presented by FDIA

1401 Maclay Commerce Drive  
Tallahassee, FL 32312  
[www.fdia.net](http://www.fdia.net)



May 10-12, 2018

Renaissance Orlando at SeaWorld | Orlando, FL

PRESORTED  
STANDARD  
U.S. Postage  
**PAID**  
Pontiac, IL  
Permit #592

Don't miss out on the largest dental laboratory meeting in the Southeastern United States!

